

Southcoast Database - Punting Form Enabled

Quick Start Guide – Screenshots (Click Index to Navigate)

Figure 1 – Auto-Download of Data	2
Figure 2 - One-Click Update of Data	3
Figure 3 - KwikPik....Load Meeting Files.....	4
Figure 4 - Kwik List....Select Meeting Date.....	5
Figure 5 - KwikPikRace List	6
Figure 6 - KwikPik....Field List, PF Enabled Default Column Setting.....	7
Figure 7 - KwikPik....Field List, PF Enabled User Defined Column Setting	8
Figure 8 - KwikPik....Field List, PF Enabled User Defined ‘Plus’ Column Setting	9
Figure 9 - KwikPik....Field List, PF Enabled Custom 1 Column Setting	10
Figure 10 - KwikPik....Field List, PF Enabled Custom 1 ‘Plus’ Column Setting.....	11
Figure 11 - KwikPik....Field List, PF Enabled Custom 2 Column Setting	12
Figure 12 – Race Detail, PF Enabled Default Column Setting	13
Figure 13 - Race Detail, PF Enabled User Defined Column Setting.....	14
Figure 14 - Race Detail, PF Enabled Custom 1 Column Setting.....	15
Figure 15 - Race Detail, PF Enabled Custom 1 ‘Plus’ Column Setting	16
Figure 16 - Race Detail, PF Enabled Custom 1 ‘Plus-Plus’ Column Setting	17
Figure 17 - Race Detail, PF Enabled Custom 2 Column Setting.....	18
Figure 18 - Previous Runs, PF Enabled Default Column Setting	19
Figure 19 - Previous Runs, PF Enabled User Defined Column Setting	20
Figure 20 - Previous Runs, PF Enabled Custom 1 Column Setting	21
Figure 21 - Previous Runs, PF Enabled Custom 1 ‘Plus’ Column Setting.....	22
Figure 22 - Previous Runs, PF Enabled Custom 2 Column Setting	23
Figure 23 - Previous Runs, PF Enabled Custom 2 ‘Plus’ Column Setting.....	24
Figure 24 - SuperTune....Date Selection	25
Figure 25 - SuperTune....Meeting List for Date.....	26
Figure 26 - SuperTune....Track Selection	27
Figure 27 - SuperTune....Meeting Date List for Track	28

Figure 1 – Auto-Download of Data

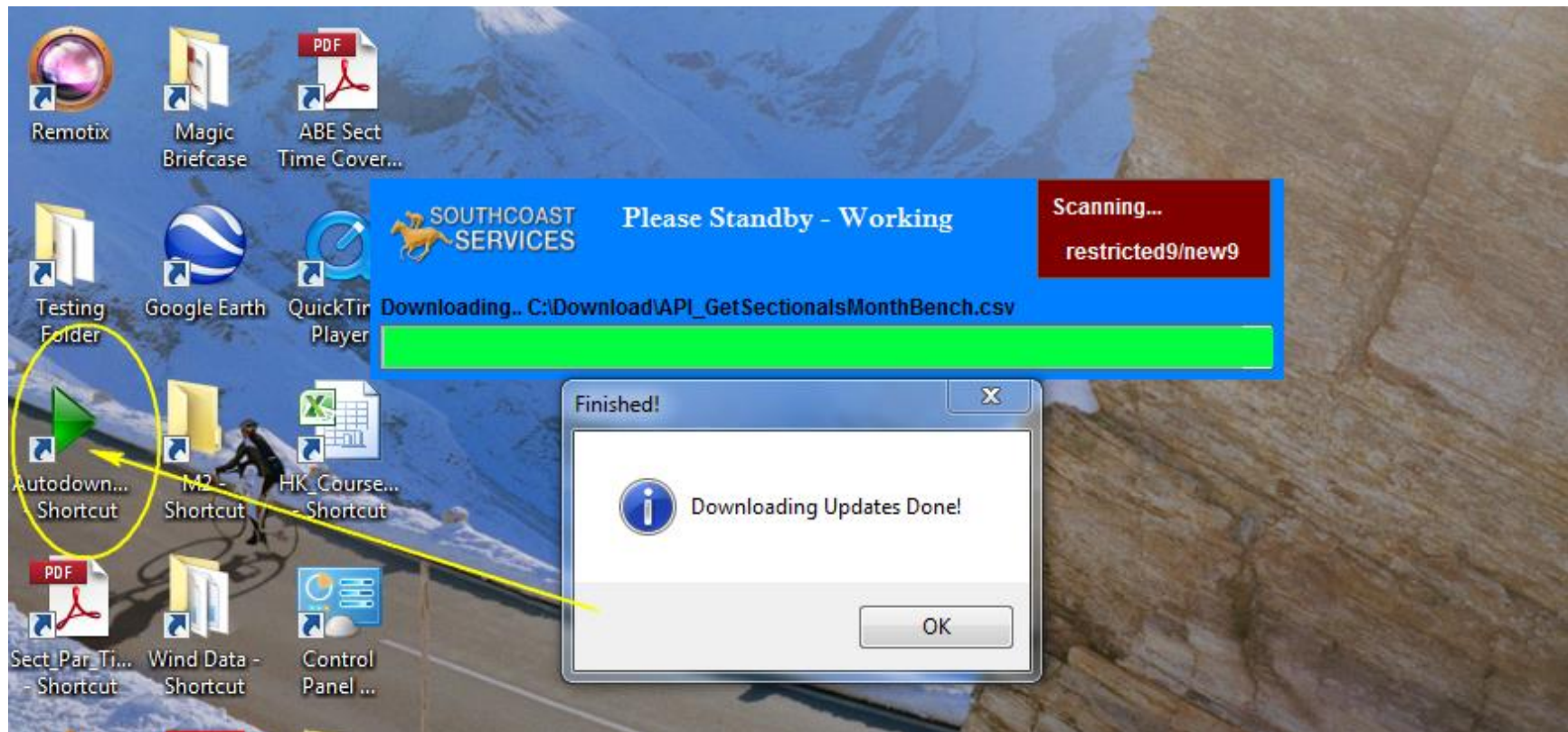


Figure 2 - One-Click Update of Data

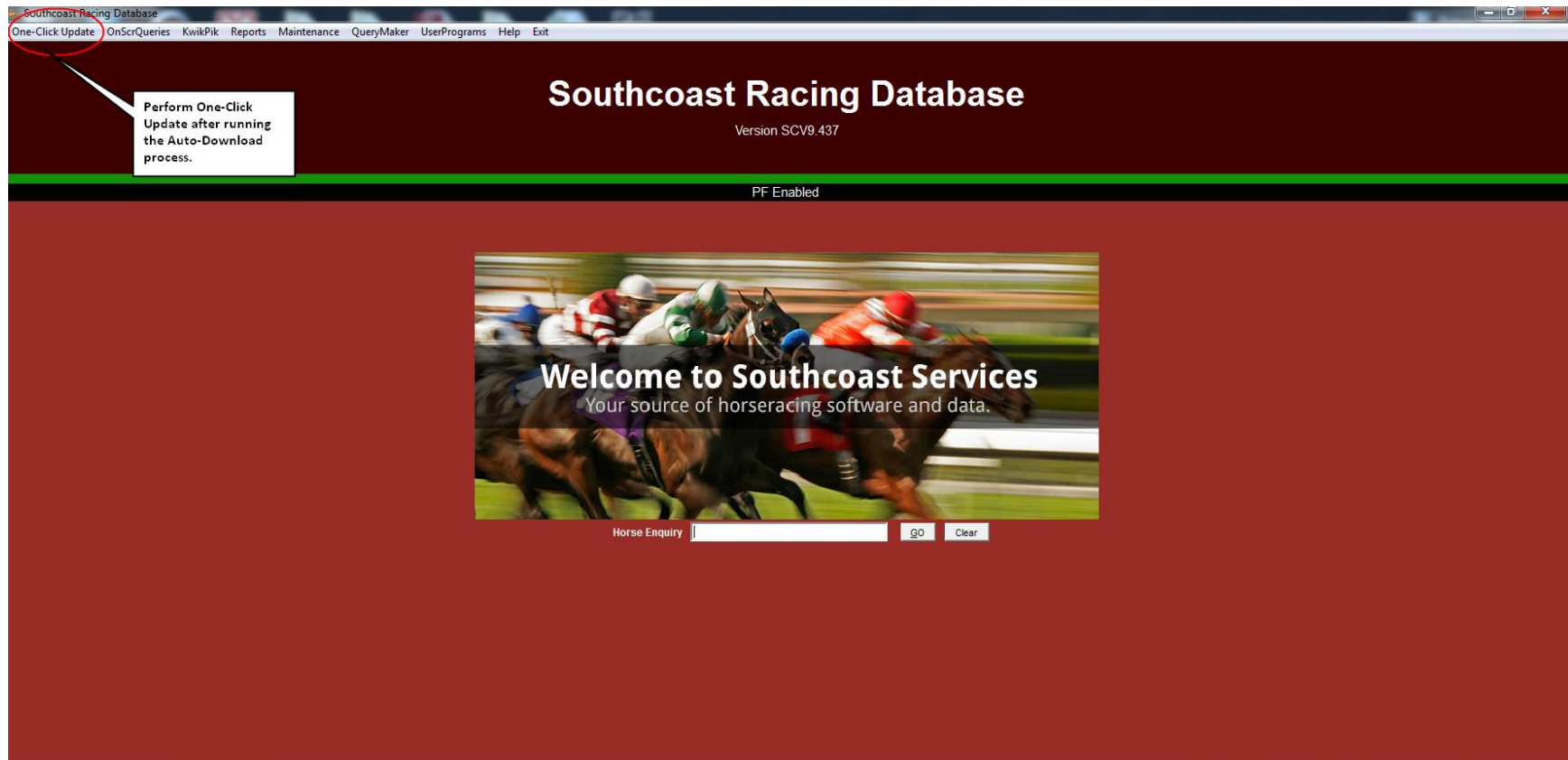


Figure 3 - KwikPik....Load Meeting Files

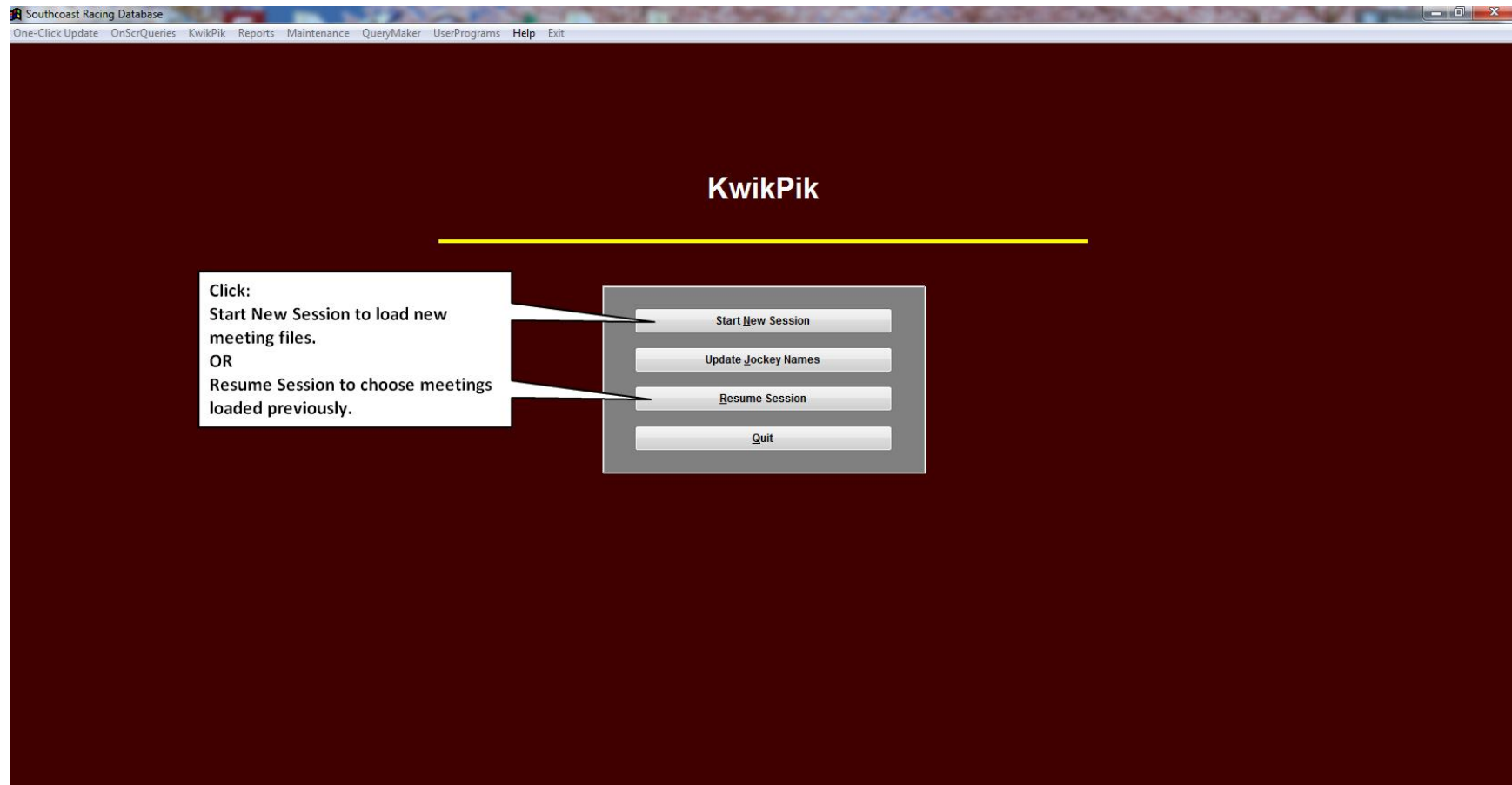


Figure 4 - Kwik List...Select Meeting Date

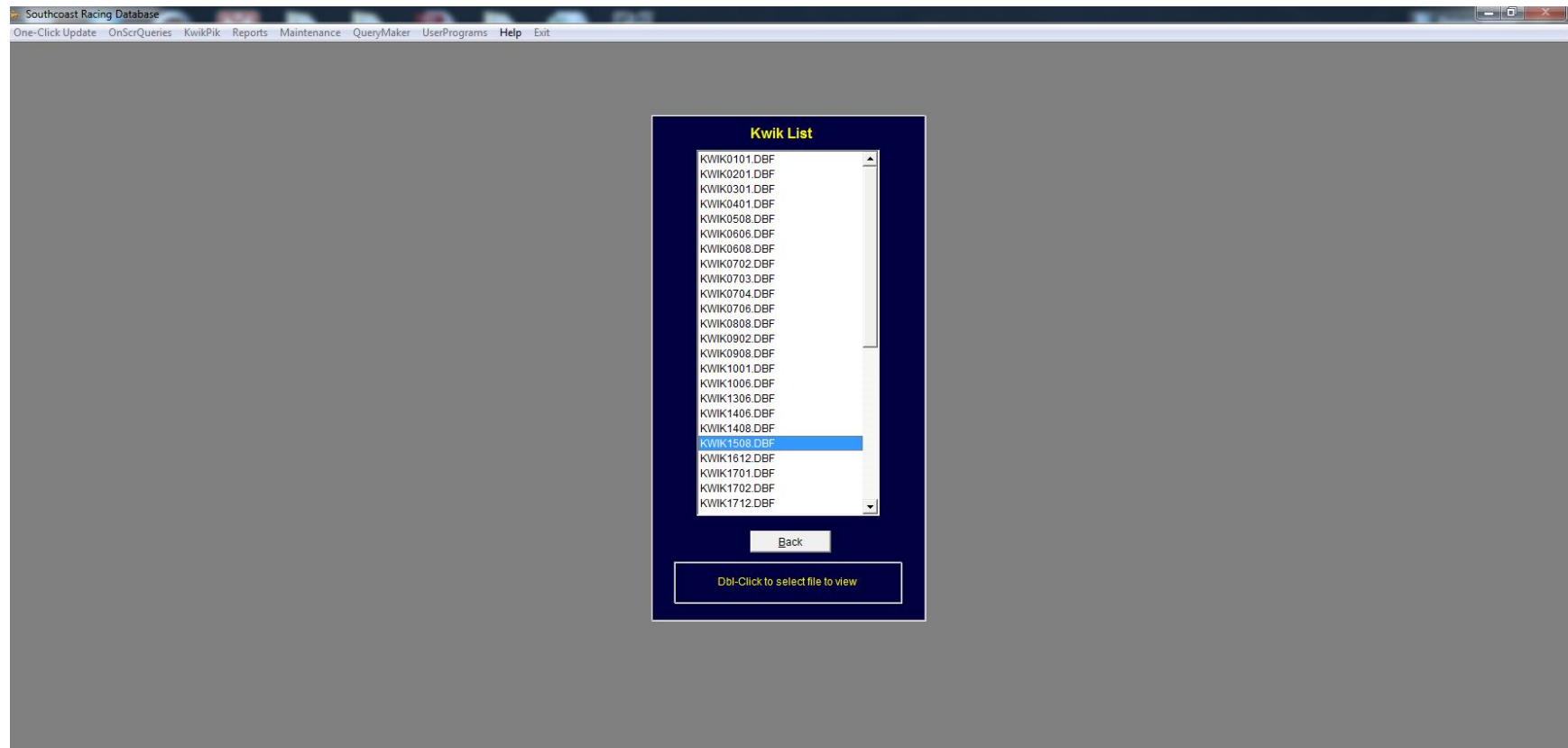


Figure 5 - KwikPikRace List

[illegible]

Figure 6 - KwikPik....Field List, PF Enabled Default Column Setting

Southcoast Racing Database

One-Click Update OnScrQueries KwikPik Reports Maintenance QueryMaker UserPrograms Help Exit

KwikPik Field F3 - Next Race F4 - Prev Race ESC - Prev Screen ?

15-Aug-2015 ROSEHILL 4 14:25 1400m 80B.3+FM . 85000 C 49.5 R

? H.Gen J.Gen

Exp To: Good 4 Penet: 4.61 Rail: +6m Ent. Crs.

Hn	Form	Horse	Scr	API	Earn AS	Jockey	Wgt	Bn	Rat	Trainer	Joc	Cm	TP	Oth	Price	PpOdd	Career	Distance	Track	Fast	Good	Dead	Slow	Heavy	First Up	Second Up	Third + Up	Ag	Sx	Colours
2	8416x9	NISROC		10011	130145	TravisWol	59.0	3	54.5	RJQuinton			2.0		7.8	7/1	13: 4. 0. 3	7: 2. 0. 1	3: 0. 0. 1	1: 1. 0. 0	8: 3. 0. 2		4: 0. 0. 1		4: 2. 0. 0	2: . . 2	2: 2. . .	5	M	royal blue, white
4	1116x4	MARPLE MISS		20309	182785	JBouman	58.0	12	54.0	KALees					15.5	13/4	9: 4. 0. 0	3: 2. 0. 0	1: 1. 0. 0		7: 4. 0. 0		2: 0. 0. 0		3: 0. 0. 0	2: 2. . .	2: 1. . .	4	M	purple, pink, strip
10	98x555	BRING A RING		9492	170850	MxKO'Hari	54.0	8	54.5	MatthewDal					3.1	10/1	18: 3. 0. 4	4: 1. 0. 0	4: 1. 0. 1		12: 3. 0. 2		6: 0. 0. 2		5: 2. 0. 1	4: . . 1	4: . . 1	5	M	ilac and white h
3	3x7742	HOLY DELUSIONS		9269	259520	GSchofield	58.5	9	52.0	CJWaller					62.1	4/1	28: 4. 6. 5	2: 0. 0. 1	11: 1. 2. 2	1: 0. 0. 0	18: 3. 6. 2		6: 1. 0. 2	3: 0. 0. 1	5: 1. 2. 1	6: 2. 1. .	6: 1. 1. 1	6	M	green, yellow star
11	x0238x	BLACK BOOTY		3352	87145	JCassidy	54.0	4	37.5	RichardLan					312.5	14/1	26: 5. 7. 2	6: 2. 1. 1			22: 5. 6. 2		4: 0. 1. 0		6: 1. 3. 0	5: . 2. 1	5: 2. . .	7	M	teal, ilac spots, j
7	x38385	AEROBAR		10960	153435	BShinn	55.5	5	48.0	GARyan					103.1	10/1	14: 2. 0. 4	2: 0. 0. 0	6: 0. 0. 2		5: 1. 0. 0		6: 0. 0. 3	3: 1. 0. 1	3: 1. 0. 2	3: . . 1	3: . . 1	4	M	pink, pale blue h
5	2436x1	OXFORD HEART		4964	143950	TommyBe	56.5	1	50.0	MxKilough					62.1	15/4	29: 3. 7. 8	1: 0. 0. 0	4: 0. 0. 1		14: 0. 4. 5		10: 3. 2. 1	5: 0. 1. 2	6: 1. 2. 2	5: 2. . 2	5: . 1. 1	6	M	corse, ilac stars
8	3x520x	JIAVUQUAN		6292	62921	CReth	55.5	11	49.5	JohnThomp					51.5	10/1	10: 1. 5. 1		2: 0. 0. 0		5: 0. 3. 0		5: 1. 2. 1		3: 0. 2. 0	1: . 1. .	1: . . .	5	M	red, yellow stars
9	9x8777	REPLY CHURLISH	Scr	5388	113145		55.5	0	46.0	RSEnglebr							21: 5. 2. 0	6: 0. 0. 0	5: 1. 0. 0		14: 4. 2. 0		5: 1. 0. 0	2: 0. 0. 0	4: 1. 0. 0	4: 1. . .	4: 1. . .	6	M	pale blue, orange
1	60x453	FOOTY FAN		12011	180170	McCluttm	59.0	2	52.0	WMSimkarc		3.0			15.5	6/1	15: 5. 2. 2	5: 1. 0. 1	4: 1. 0. 1	1: 1. 0. 0	7: 2. 2. 1		5: 2. 0. 1	2: 0. 0. 0	4: 1. 0. 1	4: 1. . .	3: 1. 1. 1	6	M	pink, black diag
6	17144x	CAST IN STONE		5048	90855	TClerk	56.0	10	55.5	BartJames					3.9	20/1	19: 4. 0. 1	3: 1. 0. 0	1: 1. 0. 0		12: 2. 0. 1		3: 0. 0. 0	3: 2. 0. 0	3: 1. 0. 0	2: . . .	2: . . .	5	M	white, purple infl
12	x11651	LAIN GIRL		5556	50005	SClippet	54.0	6	47.5	LukePrice					62.1	12/1	9: 4. 0. 0	1: 1. 0. 0			5: 2. 0. 0		2: 1. 0. 0	2: 1. 0. 0	2: 1. 0. 0	2: 1. . .	2: 1. . .	5	M	dark green, lime

Carl8 w17 p39 Dis4 w25 p26 Trk4 w25 p50 1up5 w40 p60 2up4 w0 p25 3+up4 w0 p25

F--0 w0 p0 G--12 w25 p42 D--0 w0 p0 S--6 w0 p33 H--0 w0 p0

None Fast Good Dead Slow Heavy Sand 100 ? Enable Col Drag

Print RD RaceDet SpeedMap HorStats Rcalc SuperTun

S.Def C.U.Def Cus1 Cus2 TrainStats JocStats Print PR PrevRuns Back

Date	Dys	Track	Fp	Dist	Class	Rat	Mgn	Tc	Jockey	Bn	Cwt	Apc	Time	Odds	Prs	\$Won	Prize	Limit	Strs	Rn	SecTime	Fluctuations	Air	Dow	Prep	Rfs	M/C	ClsF	ShortComment	ShortRace	Stew.Rep	Trainer	PlaceGetterA	
25/07/15	20	CAUL	5	1200	OPN. 3+ FM	51.0	2.5	G	CNewitt	11	54.0		1:11.82	20	1.1*	2.0	80.0	54.0	12	5	600/35.65	25-1,20-1	52.0	Sat	5	3	M	55	Worked 3 deep to		Ran wide early stag	MATTHEW DALE	1 Forgeress	-.1
05/07/15	25	CANB	5	1000	FLY . .	44.5	4.9	S	BWard	2	54.0		1:00.11	7-2	5.4	0.4	16.0	54.0	5	2	600/36.61	7-2,7-2	45.5	Sun	5	2	C	52	Drifted back last f			MATTHEW DALE	1 ChiefOfTheClan	-3.0
10/06/15	27	CANT	6	1250	70B. 3+ FM	43.0	3.6	S	BrodieLoy	6	57.0	-3.0	1:16.13	14	3.2	0.5	40.0	54.0	8	4	600/36.73	12-1,14-1	44.0	Wed	5	1	M	45.5	Sett 3rd 3WNC O/R			MATTHEW DALE	1 QueenOfKariba	-1.3
					Spell - 270																													
13/09/14	28	RHL	8	1500	75B. 3+ FM	45.0	4.7	D	TClerk	10	59.0		1:31.13	12	5.2	1.0	85.0	54.0	12	1	600/35.73	8-1,12-1	49.0	Sat	4	4	M	47.0	Came across to st			TONY MCEVOY	1 VillaSplendido	-.2
16/08/14	35	RHL	9	1400	75B. 3+ FM	37.0	8.2	D	MxWCosta	10	56.0	-3.0	1:23.08	9-2	5.5*	1.0	85.0	54.0	10	2	600/35.42	5-16,19-2	41.0	Sat	4	3	M	47.5	5th caught 3W NC			TONY MCEVOY	1 Sensualism	-.1
12/07/14	28	FLEM	7	1200	LR . 3 . .	56.0	5.0	S	Dyendall	1	56.5		1:10.42	14	6.5	2.4	121.0	SWP	15	7	600/35.23	10-1,14-1	61.0	Sat	4	2	M	53.0	Close up 4th & 5th		Failed due to track c	TONY MCEVOY	1 Pyrrholic	-.5
14/06/14	15	FLEM	3	1000	OPN. 3 . .	50.5	4.7	D	KaylaNisb	2	57.0	-3.0	0:57.55	7	6.3	7.2	80.0	54.0	10	7	600/33.30	11-2,7-1	55.5	Sat	4	1	M	51.	3rd behind speed			TONY MCEVOY	1 IlCavallo	-4.3
06/06/14		GAWL	2	1000	BTIRIAL		0.1	D	OTourneur	2			1:01.89																					
					Spell - 154																													
11/01/14	27	GCST	16	1400	OPN. 3 . .	33.0	16.8	G	PRobl	5	55.5		1:20.78	16	5.5*		1000.0	SWP	16	5	600/34.44	25-1,16-1	41.0	Sat	3	6	P	53.	Sett 5th. Up/losing		Tightened for room.	TONY MCEVOY	1 SweetIdea	-1.0

C

H Worked 3 deep to cross and lead 700m tl. Kicked 300m. Headed 150m. Battled on ok. BMF - TF J R

S Ran wide early stages. G NROL 1ST TIME.

S.Def Column Setting is selected for both the Top and Bottom Pane (see Radio Buttons – mid screen).

The Top Pane shows the Race Field for an Upcoming Race along with key statistics for each runner.

The Bottom Pane shows Previous Run Data for the runner selected (Bring A Ring) in the Top Pane (from the most recent run).

Figure 7 - KwikPik....Field List, PF Enabled User Defined Column Setting

Southcoast Racing Database

One-Click Update OnScrQueries KwikPik Reports Maintenance QueryMaker UserPrograms Help Exit

KwikPik Field

F3 - Next Race F4 - Prev Race ESC - Prev Screen ?

15-Aug-2015 ROSEHILL 4 14:25 1400m 80B.3+.FM . 85000 C 49.5 R

H.Gen J.Gen

ApCimInd: Y

Scr. at Bottom: Y

Exp To: Good 4 Penet: 4.61 Rail: +6m Ent. Crs.

Hn	Form	Horse	Bn	Scr	Ag	Sx	Wgt	Dys	Jockey	Cm	Trainer	TrjccSR%	PrOdds	Rat	Price	PFCls+/-	SCScore	NR	PrSeHist	AHSP	PrsHist	ETR	L6R	TR	EPr	L6Pr	TPr	WR	WTR	WPr	WTPr	Gear Changes	Career	Distance	Track		
2	8416x9	NISROC	3	5	M	59.0	14		TravisWolfgram	2.0	RJQuinton	16.7%	7/1	54.5	7.8	-3.6	78	4	9.35	7	59.2	m/f	3	6	1	8.62	22.42	4.37	4	3	7.11	5.42		Blin OFF FIRST TIME	13: 4. 0. 3	7: 2. 0. 1	3: 0. 0. 0
4	1116x4	MAPLE MISS	12	4	M	58.0	17		JBowman		KALees	13.3%	13/4	54.0	15.5	3.6	77	2	6.03	3	38.8	op	5	5	2	22.05	21.22	5.13	6	4	10.30	6.85		9: 4. 0. 0	3: 2. 0. 0	1: 1. 0. 0	
10	98x555	BRING A RING	8	5	M	54.0	21		McKOhara		MatthewDale	18.2%	10/1	54.5	3.1	-3.0	60	11	31.37	5	56.2	m/f	2	25	3	2.76	900.00	5.80	2	2	4.75	5.22		18: 3. 0. 4	4: 1. 0. 0	4: 1. 0. 0	
3	3x7742	HOLY DELUSIONS	9	6	M	58.5	7		GSchofield		CJWaller	13.9%	4/1	52.0	62.1	-3.6	95	1	3.95	10	78.6	bm	25	1	4	900.00	2.07	6.74	1	1	3.76	4.82		28: 4. 6. 5	2: 0. 0. 1	11: 1. 2. 0	
11	x0238x	BLACK BOOTY	4	7	M	54.0	164		JCassidy		RichardLaming	100.0%	14/1	37.5	312.5	7.3	57	9	20.72	9	76.1	bm	25	2	5	900.00	5.41	8.83	9	6	136.69	16.59		26: 5. 7. 2	6: 2. 1. 1		
7	x38385	AEROBAR	5	4	M	55.5	14		BShinn		GARYan	6.6%	10/1	48.0	103.1	-3.6	45	8	17.73	2	28.5	op	1	25	6	2.71	900.00	9.37	7	7	104.65	17.20		14: 2. 0. 4	2: 0. 0. 0	6: 0. 0. 0	
5	2438x1	OXFORD HEART	1	6	M	56.5	17		TommyBerry		MsKWaugh	10.0%	15/4	50.0	62.1	3.6	45	6	16.56	4	55.3	m/f	25	8	7	900.00	47.26	71.78	8	9	123.35	90.75		29: 3. 7. 8	1: 0. 0. 0	4: 0. 0. 0	
8	3x520x	JAYUGUAN	11	5	M	55.5	147		CReth		JohnThompson	9.0%	10/1	49.5	51.5	-3.5	58	5	15.03	8	71.0	mfbm	25	9	8	900.00	198.64	82.34	3	5	6.48	12.02		10: 1. 5. 1		2: 0. 0. 0	
9	9x8777	REPLY CHURLISH	0	Scr	6	M	55.5	2			RSEnglebrecht			46.0		-3.6	35	13	259.65	4	43.6	op/mf	4	25	8	6.44	900.00	26.78	6	9	18.98	22.21		21: 5. 2. 0	6: 0. 0. 0	5: 1. 0. 0	
1	60x453	FOOTY FAN	2	6	M	59.0	14		McNutman	3.0	WMSlinkard	21.0%	6/1	52.0	15.5	-3.6	55	7	17.49	1	15.0	l	4	3	9	9.56	7.29	101.90	5	8	9.42	17.25		15: 5. 2. 2	5: 1. 0. 1	4: 1. 0. 0	
6	17144x	CAST IN STONE	10	5	M	56.0	176		TCClark		Bart&JamesCumm	11.7%	20/1	55.5	3.9	5.6	30	10	29.35	6	57.1	m/f	6	7	25	764.53	47.03	900.00	25	25	900.00	900.00		18: 4. 0. 1	3: 1. 0. 0	1: 1. 0. 0	
12	x11651	LANI GIRL	6	5	M	54.0	10		SClipperton		LukePrice	14.3%	12/1	47.5	62.1	10.9	28	3	9.29	12	84.9	bm	25	25	25	900.00	900.00	900.00	25	25	900.00	900.00		9: 4. 0. 0	1: 1. 0. 0		

Carl8 w17 p39 Dis4 w25 p25 Trk4 w25 p50 1up5 w40 p60 2up4 w0 p25 3+up4 w0 p25

DBI-Click Date for Rac Det. Right-Click yellow hd. to sort.

F--0 w0 p0 G--12 w25 p42 D--0 w0 p0 S--6 w0 p33 H--0 w0 p0

< > < > < > < > < > < > < > < > < > < > < > < > < > < > < > < > < > < > < > < > < > < > < > < > < > < > < > < > < > < > < > < > < > < > < > < > < > < > < > < > < > < > < > < > < > < > < > < > < > < > < > < > < > < > < > < > < > < > < > < > < > < > < > < > < > < > < > < > < > < > < > < > < > < > < > < > < > < > < > < > < > < > < > < > < > < > < > < > < > < > < > < > < > < > < > < > < > < > < > < > < > < > < > < > < > < > < > < > < > < > < > < > < > < > < > < > < > < > < > < > < > < > < > < > < > < > < > < > < > < > < > < > < > < > < > < > < > < > < > < > < > < > < > < > < > < > < > < > < > < > < > < > < > < > < > < > < > < > < > < > < > < > < > < > < > < > < > < > < > < > < > < > < > < > < > < > < > < > < > < > < > < > < > < > < > < > < > < > < > < > < > < > < > < > < > < > < > < > < > < > < > < > < > < > < > < > < > < > < > < > < > < > < > < > < > < > < > < > < > < > < > < > < > < > < > < > < > < > < > < > < > < > < > < > < > < > < > < > < > < > < > < > < > < > < > < > < > < > < > < > < > < > < > < > < > < > < > < > < > < > < > < > < > < > < > < > < > < > < > < > < > < > < > < > < > < > < > < > < > < > < > < > < > < > < > < > < > < > < > < > < > < > < > < > < > < > < > < > < > < > < > < > < > < > < > < > < > < > < > < > < > < > < > < > < > < > < > < > < > < > < > < > < > < > < > < > < > < > < > < > < > < > < > < > < > < > < > < > < > < > < > < > < > < > < > < > < > < > < > < > < > < > < > < > < > < > < > < > < > < > < > < > < > < > < > < > < > < > < > < > < > < > < > < > < > < > < > < > < > < > < > < > < > < > < > < > < > < > < > < > < > < > < > < > < > < > < > < > < > < > < > < > < > < > < > < > < > < > < > < > < > < > < > < > < > < > < > < > < > < > < > < > < > < > < > < > < > < > < > < > < > < > < > < > < > < > < > < > < > < > < > < > < > < > < > < > < > < > < > < > < > < > < > < > < > < > < > < > < > < > < > < > < > < > < > < > < > < > < > < > < > < > < > < > < > < > < > < > < > < > < > < > < > < > < > < > < > < > < > < > < > < > < > < > < > < > < > < > < > < > < > < > < > < > < > < > < > < > < > < > < > < > < > < > < > < > < > < > < > < > < > < > < > < > < > < > < > < > < > < > < > < > < > < > < > < > < > < > < > < > < > < > < > < > < > < > < > < > < > < > < > < > < > < > < > < > < > < > < > < > < > < > < > < > < > < > < > < > < > < > < > < > < > < > < > < > < > < > < > < > < > < > < > < > < > < > < > < > < > < > < > < > < > < > < > < > < > < > < > < > < > < > < > < > < > < > < > < > < > < > < > < > < > < > < > < > < > < > < > < > < > < > < > < > < > < > < > < > < > < > < > < > < > < > < > < >

U.Def Column Setting is selected for both the Top and Bottom Pane (see Radio Buttons – mid screen).

Punting Form ratings are now shown in the Top Pane (sorted by the Overall Time Rating, **TR**). See Appendix 1 – page 29 - for an explanation of the various types of ratings data.

A comparison of the Official Race Time Versus the Punting Form Digital Time is shown in the Bottom Pane (**orange** headings).

Figure 8 - KwikPik....Field List, PF Enabled User Defined 'Plus' Column Setting

Southcoast Racing Database

One-Click Update OnScrQueries KwikPik Reports Maintenance QueryMaker UserPrograms Help Exit

KwikPik Field

F3 - Next Race F4 - Prev Race ESC - Prev Screen ?

15-Aug-2015 ROSEHILL 4 14:25 1400m 80B.3+.FM. 85000 C 49.5 R

H.Gen J.Gen

Exp To: Good 4 Penet: 4.61 Rail: +6m Ent. Crs.

Hn	Form	Horse	Bn	Scr	Ag	Sx	Wgt	Dys	Jockey	Cm	Trainer	TJcSR%	PoOdds	Rat	Price	PFCIs+/-	SCScore	NR	NPr	PrSeHist	AHSP	r/sHist	ETR	L6R	TR	EPr	L6Pr	TPr	WR	WTR	WPr	WTPR	Gear Changes	Career	Distance	Track
2	8416x9	NSIROC	3	5	M	59.0	14		TravisWolfgram	2.0	RJQuinton	16.7%	7/1	54.5	7.8	-3.6	78	4	9.35	7	59.2	mf	3	6	1	8.62	22.42	4.37	4	3	7.11	5.42	Bin OFF FIRST TIME	13: 4. 0. 3	7: 2. 0. 1	3: 0. 0. 0
4	1116x4	MARPLE MISS	12	4	M	58.0	17		JBowman		KALees	13.3%	13/4	54.0	15.5	3.6	77	2	6.03	3	38.8	op	5	5	2	22.05	21.22	5.13	6	4	10.30	6.85	9: 4. 0. 0	3: 2. 0. 0	1: 1. 0. 0	
10	98x655	BRING A RING	8	5	M	54.0	21		MsKO'hara		MatthewDale	18.2%	10/1	54.5	3.1	-3.0	60	11	31.37	5	56.2	mf	2	25	3	2.76	900.00	5.80	2	2	4.75	5.22	18: 3. 0. 4	4: 1. 0. 0	4: 1. 0. 0	
3	3x7742	HOLY DELUSIONS	9	6	M	58.5	7		GSchofield		CJWaller	13.9%	4/1	52.0	62.1	-3.6	95	1	3.95	10	78.6	bm	25	1	4	900.00	2.07	6.74	1	1	3.76	4.82	28: 4. 6. 5	2: 0. 0. 1	11: 1. 2. 0	
11	x0238x	BLACK BOOTY	4	7	M	54.0	164		JCassidy		RichardLaming	100.0%	14/1	37.5	312.5	7.3	57	9	20.72	9	76.1	bm	25	2	5	900.00	5.41	8.83	9	6	136.69	16.59	26: 5. 7. 2	6: 2. 1. 1	2: 0. 0. 0	
7	x38385	AEROBAR	5	4	M	55.5	14		BShinn		GARYan	6.6%	10/1	48.0	103.1	-3.6	45	8	17.73	2	28.5	op	1	25	6	2.71	900.00	9.37	7	7	104.65	17.20	14: 2. 0. 4	2: 0. 0. 0	6: 0. 0. 0	
5	2436x1	OXFORD HEART	1	6	M	56.5	17		TommyBerry		MsKIVaugh	10.0%	15/4	50.0	62.1	-3.6	45	6	16.56	4	55.3	mf	25	8	7	900.00	47.26	71.78	8	9	123.35	90.75	29: 3. 7. 8	1: 0. 0. 0	4: 0. 0. 0	
8	3x520x	JAYUGUAN	11	5	M	55.5	147		CReith		JohnThompson	9.0%	10/1	49.5	51.5	-3.5	58	5	15.03	8	71.0	mf/bm	25	9	8	900.00	198.64	82.34	3	5	6.48	12.02	10: 1. 5. 1	2: 0. 0. 0	2: 0. 0. 0	
9	9x8777	REPLY CHURLISH	0	Scr	6	M	55.5	2			RJEnglebrecht			46.0		-3.6	35	13	259.65	4	43.6	op/mf	4	25	8	6.44	900.00	26.78	6	9	18.98	22.21	Wnk FIRST TIME	21: 5. 2. 0	6: 0. 0. 0	5: 1. 0. 0
1	60x453	FOOTY FAN	2	6	M	59.0	14		McNutman	3.0	WMSlinkard	21.0%	6/1	52.0	15.5	-3.6	55	7	17.49	1	15.0	l	4	3	9	9.56	7.29	101.90	5	8	9.42	17.25	15: 5. 2. 2	5: 1. 0. 1	4: 1. 0. 0	
6	17144x	CAST N STONE	10	5	M	56.0	176		TClark		Bart&JamesCummi	11.7%	20/1	55.5	3.9	5.6	30	10	29.35	6	57.1	mf	6	7	25	764.53	47.03	900.00	25	25	900.00	900.00	18: 4. 0. 1	3: 1. 0. 0	1: 1. 0. 0	
12	x11651	LANI GIRL	6	5	M	54.0	10		SClipperton		LukePrice	14.3%	12/1	47.5	62.1	10.9	28	3	9.29	12	84.9	bm	25	25	25	900.00	900.00	900.00	25	25	900.00	900.00	9: 4. 0. 0	1: 1. 0. 0	1: 1. 0. 0	

Carl8 w17 p39 Dis4 w25 p25 Trk4 w25 p50 1up5 w40 p60 2up4 w0 p25 3+up4 w0 p25

F--0 w0 p0 G--12 w25 p42 D--0 w0 p0 S--6 w0 p33 H--0 w0 p0

<

<

>

>

None

Fast

Good

Dead

Slow

Heavy

Sand

100

?

Enable Col Drag

Print RD

RaceDet

SpeedMap

HorStats

Rcalc

SuperTun

S.Def

U.Def

Cus1

Cus2

UD

C1

C2

Auto

Man

Tag Print

HKI

Time

Mps

?

S.Def

U.Def

Cus1

Cus2

TrainStats

JocStats

Print PR

PrevRuns

Back

Date	Dys	Track	TPr	EPr	L6Pr	WR	WTR	WPr	WTPR	EarPce	LatPce	L1200	L1000	L800	L600	L400	L200	12to10	10to8	8to6	8to4	4to2	2toFin	To.1200	To.1000	To.800	To.600	To.400	To.200	Lst.200	Time	Sec1	Sec2	Sec3	Sec4	Sec5	Sec6	HKG	Handl.Rat	
25/07/15	20	CAUL	4.06	1.50	900.00	1	1	3.36	3.68	12.28	11.90			47.60	36.08	24.08	12.20			11.52	12.00	11.88	12.20			24.56	36.08	48.08	59.96	12.20	1.11.82									69
05/07/15	25	CANB	1.00	1.25	1.93	1	1	1.00	1.00	12.02	12.29			36.88	25.56	13.76				11.32	11.80	13.76				24.04	35.36	47.16	13.76	1.00.11									71	
10/06/15	27	CANT	4.53	2.99	178.96	2	2	3.82	4.14	12.11	12.27			49.08	37.30	24.74	12.78			11.78	12.56	11.96	12.78			27.24	39.02	51.58	63.54	12.78	1.16.13									72
13/09/14	28	RHL	3.93	2.79	900.00	2	1	3.52	3.71	12.19	12.27			61.32	49.08	36.56	24.52	12.58		12.24	12.52	12.04	11.94	12.58		30.44	42.68	55.20	67.24	79.18	12.58	1.31.13								73
16/08/14	35	RHL	5.43	3.25	75.75	2	2	3.84	4.50	12.21	11.94			59.51	47.76	36.20	24.76	12.84		11.75	11.56	11.44	11.92	12.84		24.89	36.64	48.20	59.64	71.56	12.84	1.23.08								75
12/07/14	28	FLEM								12.29	11.64			57.26	46.57	35.56	24.28	12.70		10.69	11.01	11.28	11.58	12.70		13.90	24.59	35.60	46.88	58.46	12.70	1.10.42								76
14/06/14	25	FLEM								12.28	11.07			44.26	33.71	23.08	12.08			10.55	10.63	11.00	12.08			14.02	24.57	35.20	46.20	12.08	0.57.55								76	
06/06/14		GAWL																																						1.01.89
11/01/14	21	GCST								11.62	12.36									11.00	12.28	13.80					46.48	57.48	69.76	13.80	1.20.78									

C

H Worked 3 deep to cross and lead 700m ft. Kicked 300m. Headed 150m. Battled on ok. BMF - TF J R

S Ran wide early stages. G NR0L 1ST TIME.

U.Def Column Setting is selected for both the Top and Bottom Pane (see Radio Buttons – mid screen). The Bottom Pane has also been scrolled to the right in this view.

The runners 'individual' early pace (ave per 200m to the 800m or 600m marker) and raw time sectional/split data is shown.

Figure 9 - KwikPik....Field List, PF Enabled Custom 1 Column Setting

Southcoast Racing Database

One-Click UpdateOnScrQueriesKwikPikReportsMaintenanceQueryMakerUserProgramsHelpExit

KwikPik Field

F3 - Next RaceF4 - Prev RaceESC - Prev Screen?

15-Aug-2015ROSEHILL414:251400m80B.3+.FM.85000C49.5R

H.GenJ.Gen

ApClimIncl: YScr. at Bottom: ?

Exp Tc: Good 4Penet: 4.61Rail: +6m Ent. Crs.

Hn	Form	Horse	Bn	Scr	Ag	Sx	Wgt	Dys	Jockey	Cm	Trainer	TrJocSR%	PpOdd	Rat	Price	PFClis+/-	SCScore	NR	NPr	PrSeHist	AHSP	r/sHist	ETR	L6R	TR	EP	L6Pr	TPr	WR	WTR	WPr	WTPr	Sire	Dam	Stable	Colours
2	8416x9	NISROC	3	5	M		59.0	14	TravisWolfgram	2.0	RJQuinton	16.7%	7/1	54.5	7.8	-3.6	78	4	9.35	7	59.2	mf	3	6	1	8.62	22.42	4.37	4	3	7.11	5.42	NORTHERN METEOR	DASH FOR GREYNA	Randwick	royal blue, white i
4	1116x4	MARPLE MISS	12	4	M		58.0	17	JBowman		KALees	13.3%	13/4	54.0	15.5	3.6	77	2	6.03	3	38.8	op	5	5	2	22.05	21.22	5.13	6	4	10.30	6.85	NOT A SINGLE DOUBT	SUNSET EXPRESS	Broadmeadow	purple, pink stripes
10	98x655	BRING A RING	8	5	M		54.0	21	MsKOHara		MatthewDale	18.2%	10/1	54.5	3.1	-3.0	60	11	31.37	5	56.2	mf	2	25	3	2.76	900.00	5.80	2	2	4.75	5.22	SEBRING	HENNESSY WALTZ	Canberra	lilac and white ha
3	3x7742	HOLY DELUSIONS	9	6	M		58.5	7	GSchofield		CJWaller	13.9%	4/1	52.0	62.1	-3.6	95	1	3.95	10	78.6	bm	25	1	4	900.00	2.07	6.74	1	1	3.76	4.82	HOLY ROMAN EMPEROR	POPULAR DELUSIONS	Rosehill	green, yellow star
11	x0238x	BLACK BOOTY	4	7	M		54.0	164	JCassidy		RichardLaming	100.0%	14/1	37.5	312.5	7.3	57	9	20.72	9	76.1	bm	25	2	5	900.00	5.41	8.83	9	6	136.69	16.59	COMMANDS	CRIMSON GEM	Clyde	teal, lilac spots, p
7	x38385	AEROBAR	5	4	M		55.5	14	BShinn		GarRyan	6.6%	10/1	48.0	103.1	-3.6	45	8	17.73	2	28.5	op	1	25	6	2.71	900.00	9.37	7	7	104.65	17.20	FLYING SPUR	FLAVOURED	Rosehill	pink, pale blue h
5	2436x1	OXFORD HEART	1	6	M		56.5	17	TommyBerry		McKIVaugh	10.0%	15/4	50.0	62.1	3.6	45	6	16.56	4	55.3	mf	25	8	7	900.00	47.26	71.78	8	9	123.35	90.75	LION HEART	OXFORD PRINCESS	Wyong	coral, lilac stars i
8	3x520x	JIAUYUQUAN	11	5	M		55.5	147	CReth		JohnThompson	9.0%	10/1	49.5	51.5	-3.5	58	5	15.03	8	71.0	mf/bm	25	9	8	900.00	198.64	82.34	3	5	6.48	12.02	TEOFLO	POINTE VECIO	Randwick	red, yellow stars a
9	9x8777	REPLY CHURLISH	0	Scr	6	M	55.5	2			RSEnglebrecht			46.0		-3.6	35	13	259.65	4	43.6	op/mf	4	25	8	6.44	900.00	26.78	6	9	18.98	22.21	O'REILLY	YOU CAN'T SAY THAT	Warwick Farm	pale blue, orange
1	60x453	FOOTY FAN	2	6	M		59.0	14	McNudman	3.0	WMSinkard	21.0%	6/1	52.0	15.5	-3.6	55	7	17.49	1	15.0	i	4	3	9	9.56	7.29	101.90	5	8	9.42	17.25	AUSSIE RULES	GEELONG MAGESTIQUE	Hawkesbury	pink, black diagon
6	17144x	CAST IN STONE	10	5	M		56.0	176	TClark		BartJamesCum	11.7%	20/1	55.5	3.9	5.6	30	10	29.35	6	57.1	mf	6	7	25	764.53	47.03	900.00	25	25	900.00	900.00	REDOUTE'S CHOICE	ROSETTA STONE	Randwick	white, purple inth
12	x11651	LAIN GIRL	6	5	M		54.0	10	SClippeton		LukePrice	14.3%	12/1	47.5	62.1	10.9	28	3	9.29	12	84.9	bm	25	25	25	900.00	900.00	900.00	25	25	900.00	900.00	PURREALIST	TRAVERSE	Nowra	dark green, lime

Carl8 w17 p39 Dis4 w25 p25 Trk4 w25 p50 1up5 w40 p60 2up4 w0 p25 3up4 w0 p25

F--0 w0 p0 G--12 w25 p42 D--0 w0 p0 S--6 w0 p33 H--0 w0 p0

<><><><><><><><><><><><><><><><><><><><><><><><><><><><><><><><><><><><><><><><><><><><><><><><><><><><><><><><><><><><><><><><><><><><><><><><><><><><><><><><><><><><><><><><><><><><><><><><><><><><><><><><><><><><><><><><><><><><><><><><><><><><><><><><><><><><><><><><><><><><><><><><><><><><><><><><><><><><><><><><><><><><><><><><><><><><><><><><><><><><><><><><><><><><><><><><><><><><><><><><><><><><><><><><><><><><><><><><><><><><><><><><><><><><><><><><><><><><><><><><><><><><><><><><><><><><><><><><><><><><><><><><><><><><><><><><><><><><><><><><><><><><><><><><><><><><><><><><><><><><><><><><><><><><><><><><><><><><><><><><><><><><><><><><><><><><><><><><><><><><><><><><><><><><><><><><><><><><><><><><><><><><><><><><><><><><><><><><><><><><><><><><><><><><><><><><><><><><><><><><><><><><><><><><><><><><><><><><><><><><><><><><><><><><><><><><><><><><><><><><><><><><><><><><><><><><><><><><><><><><><><><><><><><><><><><><><><><><><><><><><><><><><><><><><><><><><><><><><><><><><><><><><><><><><><><><><><><><><><><><><><><><><><><><><><><><><><><><><><><><><><><><><><><><><><><><><><><><><><><><><><><><><><><><><><><><><><><><><><><><><><><><><><><><><><><><><><><><><><><><><><><><><><><><><><><><><><><><><><><><><><><><><><><><><><><><><><><><><><><><><><><><><><><><><><><><><><><><><><><><><><><><><><><><><><><><><><><><><><><><><><><><><><><><><><><><><>&

Cus 1 Column Setting is selected for both the Top and Bottom Pane (see Radio Buttons – mid screen).

‘Race’ Benchmarks To the 600m (light blue header) and ‘Individual’ runner Benchmarks (pink header) are shown in the Bottom Pane.

The All Average Benchmark (BM) - is a figure in Lengths, which allows performance comparison between any race regardless of class or distance (*the smaller or more -ve the number, the better the performance*). **The Class Benchmark (Cls)** - is a figure in Lengths, which allows performance comparison against what would be considered average, for that Class of race. Useful for making ‘true’ race-pace determinations.

Figure 10 - KwikPik....Field List, PF Enabled Custom 1 'Plus' Column Setting

Southcoast Racing Database

One-Click UpdateOnScrQueriesKwikPikReportsMaintenanceQueryMakerUserProgramsHelpExit

KwikPik Field

F3 - Next RaceF4 - Prev RaceESC - Prev Screen?

15-Aug-2015ROSEHILL414:251400m80B.3+.FM.85000C49.5R

H.GenJ.Gen

ApClmIncl: Y

Scr. At Bottom: ☒

Exp To: Good 4Penet: 4.61Rail: +6m Ent. Crs.

Hn	Form	Horse	Bt	Scr	Ag	Sx	Wgt	Dys	Jockey	Cm	Trainer	TrJocSR%	PpOdd	Rat	Price	PFCIs+/-	SCScore	NR	NPr	PrSeHist	AHSP	TrsHist	ETR	L6R	TR	EP	L6Pr	TPr	WR	WTR	WPr	WTPR	Sire	Dam	Stable	Colours
2	8416x9	NISROC	3	5	M	59.0	14		TravisWolfgram	2.0	RJQuinton	16.7%	7/1	54.5	7.8	-3.6	78	4	9.35	7	59.2	mf	3	6	1	8.62	22.42	4.37	4	3	7.11	5.42	NORTHERN METEOR	DASH FOR GRETHA	Randwick	royal blue, white
4	1116x4	MARPLE MISS	12	4	M	58.0	17		JBowman		KALees	13.3%	13/4	54.0	15.5	3.6	77	2	6.03	3	38.8	op	5	5	2	22.05	21.22	5.13	6	4	10.30	6.85	NOT A SINGLE DOUBT	SUNSET EXPRESS	Broadmeadow	purple, pink stripes
10	98x855	BRING A RING	8	5	M	54.0	21		MsK'O'hara		MatthewDale	18.2%	10/1	54.5	3.1	-3.0	60	11	31.37	5	56.2	mf	2	25	3	2.76	900.00	5.80	2	2	4.75	5.22	SEBRING	HENNESSY WALTZ	Canberra	lilac and white ha
3	3x7742	HOLY DELUSIONS	9	6	M	58.5	7		GSchofield		CJWalter	13.9%	4/1	52.0	62.1	-3.6	95	1	3.95	10	78.6	bm	25	1	4	900.00	2.07	6.74	1	1	3.76	4.82	HOLY ROMAN EMPEROR	POPULAR DELUSIONS	Rosehill	green, yellow star
11	x0238x	BLACK BOOTY	4	7	M	54.0	164		JCassidy		RichardLaming	100.0%	14/1	37.5	312.5	7.3	57	9	20.72	9	76.1	bm	25	2	5	900.00	5.41	8.83	9	6	136.69	16.59	COMMANDS	CRIMSON GEM	Clyde	teal, lilac spots, p
7	x38385	AEROBAR	5	4	M	55.5	14		BShinn		GARyan	6.6%	10/1	48.0	103.1	-3.6	45	8	17.73	2	28.5	op	1	25	6	2.71	900.00	9.37	7	7	104.65	17.20	FLYING SPUR	FLAVOURED	Rosehill	pink, pale blue ha
5	2436x1	OXFORD HEART	1	6	M	56.5	17		TommyBerry		MsKWaugh	10.0%	15/4	50.0	62.1	3.6	45	6	16.56	4	55.3	mf	25	8	7	900.00	47.26	71.78	8	9	123.35	90.75	LION HEART	OXFORD PRINCESS	Wyong	cerise, lilac stars c
8	3x520x	JAYUGUAN	11	5	M	55.5	147		CReith		JohnThompson	9.0%	10/1	49.5	51.5	-3.5	58	5	15.03	8	71.0	mf/bm	25	9	8	900.00	198.64	62.34	3	5	6.48	12.02	TEOFILO	PONTE VECCHIO	Randwick	red, yellow stars c
9	9x8777	REPLY CHURLISH	0	Scr	6	M	55.5	2			REnglebrecht			46.0		-3.6	35	13	259.65	4	43.6	op/mf	4	25	8	6.44	900.00	26.78	6	9	18.98	22.21	O'REILLY	YOU CANT SAY THAT	Warwick Farm	pale blue, orange
1	60x453	FOOTY FAN	2	6	M	59.0	14		McNutman	3.0	WMSlinkard	21.0%	6/1	52.0	15.5	-3.6	55	7	17.49	1	15.0	l	4	3	9	9.56	7.29	101.90	5	8	9.42	17.25	AUSSIE RULES	GEELONG MAGESTIQUE	Hawkesbury	pink, black diagon
6	17144x	CAST N STONE	10	5	M	56.0	176		TCIark		BartlJamesCumm	11.7%	20/1	55.5	3.9	5.6	30	10	29.35	6	57.1	mf	6	7	25	764.53	47.03	900.00	25	25	900.00	900.00	REDOUTE'S CHOICE	ROSETTA STONE	Randwick	white, purple infu
12	x11651	LANI GIRL	6	5	M	54.0	10		SClipperton		LukePrice	14.3%	12/1	47.5	62.1	10.9	28	3	9.29	12	84.9	bm	25	25	25	900.00	900.00	900.00	25	25	900.00	900.00	PURREALIST	TRAVERSE	Nowra	dark green, lime t

Carl8 w17 p39 Dis4 w25 p25 Trk4 w25 p50 1up5 w40 p60 2up4 w0 p25 3+up4 w0 p25

F--0 w0 p0 G--12 w25 p42 D--0 w0 p0 S--6 w0 p33 H--0 w0 p0

<

>

>

>

None

Fast

Good

Dead

Slow

Heavy

Sand

100

?

Enable Col Drag

Print RD

RaceDet

SpeedMap

HorStats

Rcalc

SuperTun

S.Def

U.Def

Cus1

Cus2

UD

C1

C2

Auto

Man

Tag Print

HKI

Time

Mps

S.Def

U.Def

Cus1

Cus2

TrainStats

JocStats

Print PR

PrevRuns

Back

Date	Dys	Track	ShortComment	ShortRace	PosF	SCScore	NR	NPr	PrSeHist	AHSP	TrsHist	ETR	L6R	TR	TPr	EP	L6Pr	WR	WTR	WPr	WTPR	Limit	RTyp	Price	\$Won	Race Name	Dow	M/C	Course	Prep	Rfs	U					
25/07/15	20	CAUL	Worked 3 deep to cross and lead 700m		5	70	9	15.36	3	51.6	mf	11.9	1	25	1	4.06	1.50	900.00	1	1	3.36	3.68	54.0	OPEN	80.0	2.0	MYPUNTER.COM JOIN TOC	Sat	M		5	3	C				
05/07/15	25	CANB	Drifted back last fence. Stayed there. O		5	100	1	3.09	5	41.3	op/mf	-1.7	1	1	1	1.00	1.25	1.93	1	1	1.00	1.00	54.0	FLY	16.0	0.4	GRANITE TRANSFORMAT	Sun	C		5	2	B				
10/06/15	25	CANT	Sett 3rd 3WNC OIL. 2W OIL. 600m. Ulp c		6	75	2	4.04	5	57.9	mf	-2.2	2	7	2	4.53	2.99	178.96	2	2	3.62	4.14	54.0	BMN70	40.0	0.5	MCGRATH ESTATE AGENT	Wed	M		5	1	B				
13/09/14	28	RHIL	Came across to sit OIL. Hit lead briefly t		8	82	2	5.41	8	71.7	mf/bm	-1.5	2	25	1	3.93	2.79	900.00	2	1	3.52	3.71	54.0	BMN73	85.0	1.0	THE PASLODE (BM73)	Sat	M		4	4	T				
16/08/14	35	RHIL	5th caught 3W NC. Gradually faded. F -		9	74	2	5.79	10	72.2	mf/bm	-17.0	1	9	3	5.43	3.25	75.75	2	2	3.84	4.50	54.0	BMN75	85.0	1.0	FAIRFIELD RSL CLUB (BM)	Sat	M		4	3	M				
12/07/14	28	FLEM	Close up 4th & 5th (one group - beyond		7																										A.R. CRESWICK SERIES FI	Sat	M		4	2	D
14/06/14	25	FLEM	3rd behind speed (bunched field middle)		3																										2014 A.R. CRESWICK SER	Sat	M		4	1	K
06/06/14		GAWL																												CATC	Fri				D		
11/01/14	27	GCST	Sett 5th. Ulp losing ground t. Just plugg		16																										G.C. 1 MILLION M.M. GUINE	Sat	P		3	6	P

C

H Worked 3 deep to cross and lead 700m tt. Kicked 300m. Headed 150m. Battled on ok. BMF - TF

J

S Ran wide early stages.

R

G NROL 1ST TIME.

Cus 1 Column Setting is selected for both the Top and Bottom Pane (see Radio Buttons – mid screen). The Bottom Pane has also been scrolled to the right in this view.

Punting Form Ratings Data (generated prior to the relevant past run) is shown in the Bottom Pane. This gives a ‘summary’ view of the pre-race/predictive data previously generated for this horse and enables a comparison with ‘actual’ performance/outcomes.

Figure 12 – Race Detail, PF Enabled Default Column Setting

Source: Source:

S.Def Column Setting is selected for both the Top and Bottom Pane (see Radio Buttons – bottom of screen).

Race Detail (in finishing order) complete with subsequent run information is shown in the Top Pane.

The Lower Pane provides a Meeting Summary showing details for the winner of each race.

Southeast Racing Database										One-Click Update OnScrQueries KwikPik Reports Maintenance QueryMaker UserPrograms Help Exit															
Race Detail																									
Date	Track	Rn	Day	Dist	Tc	Prize	Class	ClubClass	Limit	Time	SecTime	ClsFig	Cls+/-	T.Rat	TCLong	Rail Pos	Chg CIs Fig								
25/07/15	CAUL	5	Sat	1200	G	80.0	OPN.3+ FM .	3UFM OPEN	54.0	1:11.82	600/35.65	55.		-1.86	GOOD 3	TRUE POSITION ENTIRE COURSE									
? H.Gen	J.Gen																<	>	PR	NR	RaceTimes AgeImp				
Full Screen HKI No MPG																									
Fp	Horse	Mgn	\$Won	Jockey	Trainer	Bn	Cwt	Apc	Odds	Fluctuations	NSWPr	VICPr	Prs	SnzFin	Subsequent	BM To6	BM Fin	BM Lst6	Gear_Chng	Cis To6	Cis Fin	Cis Lst6	In-Run Comment	Stew Rep	ShortComment
1	FORGERESS	.WON	48.0	KatelynMalloy	Q J SCOTT	12	52.5	-1.5	13-2	7-1-8,1-13,-2	7.90	7.90	7.6*	71.80		2.1	-5.8	-7.9		6.8	2.3	-4.5			Set 3 deep N/C MF. 5-6 deep
2	IIGMACOOL	.1	14.4	TSadler	R W SMERDON	10	58.0	-2.0	15	10-1,15,-1	18.30	17.90	12.12*	71.82		5.4	-5.7	-11.1		10.1	2.4	-7.7			Jumped awkwardly. Bloc
3	NORTHERN SAINT	2.1	7.2	DThomton	M ELLERTON & S ZAHRA	9	52.5	-1.5	13-2	11-2,13,-2	8.30	8.60	11,10	72.08	4	4.9	-3.7	-8.6		9.6	4.4	-5.2			Sett WB. Improved slightly t.
4	PILLY'S WISH	2.2	3.6	MJDee	M G PRICE	8	53.5	-2.0	13-4F	5-2,13-4F	4.20	3.60	5.5	72.09		1.3	-3.6	-4.9		6.0	4.5	-1.5			Sett WMF. Improved 4-5 de
5	BRING A RING	2.5	2.0	CHewitt	MATTHEW DALE	11	54.0		20	25-1,20,-1	28.80	30.70	1,1*	72.16		-1.9	-3.3	-1.4	NROL 1ST TIME.	2.8	4.8	2.0			Worked 3 deep to cross and
6	YOUNG TIGERS JEUN	2.7	1.0	CVilliams	D HAYES & T DABERNIG	3	54.0		11-2	5-1-6,11,-1,2	5.80	6.40	6,7*	72.16	6	2.0	-3.1	-5.1		6.7	5.0	-1.7			Sett MF. Held up i Chased s
7	FLASH OF DOUBT	4.7	1.0	JyeMcneil	R D GRIFITHS	6	54.5	-1.5	20	20-1,20,-1	31.40	27.00	4.4	72.48	5	0.5	-1.1	-1.6		5.2	7.0	1.8			Sett 4th. 3 deep t. Battled on
8	BET YOU SHE ROCKS	5.5	1.0	CSchofield	M M LAURIE	5	54.0		40	30-1,40,-1	47.20	51.20	9,11	72.60	9	3.7	-0.3	-4.0		8.4	7.8	-0.6			Sett WTfM. 5 deep t. Battled
9	FINE APPROACH	7.3	1.0	Doliver	RYAN BALFOUR	2	55.0		4	4-1,9-2,4,-1	4.90	5.00	8.8	72.84		3.0	1.5	-1.5		7.7	9.6	1.9			Sett WTfM ft. Just plugged s
10	VAIN ATTRACTION	7.8	1.0	ChrisParham	D K WER	1	54.0		16	9-1,16,-1	15.10	18.00	10,9	72.96		4.5	2.0	-2.5		9.2	10.1	0.9			Sett WB t. Just plugged stee
11	AIWARE	9.1		ReganBayliss	HEATH CONNORS	4	53.0	-1.0	10	20-1,10,-1	12.20	13.00	3.2	73.12		0.1	3.3	3.2		4.8	11.4	6.6			Sett 3rd. SG I. Just plugged
12	LIBERATED ROSE	17.1		DGauci	W G COOPER	7	54.0		60	60-1,60,-1	41.30	43.80	2,3*	74.58	3	-0.9	11.3	12.2		3.8	19.4	15.6			Sett 2nd. Up t. DGO. BMF -

Race Detail (in finishing order) complete with All Average and Class Benchmarks for each runner is shown in the Top Pane.

Refer to Figure 9 for Benchmarks explanation.

Figure 14 - Race Detail, PF Enabled Custom 1 Column Setting

Southcoast Racing Database

One-Click UpdateOnScrQueriesKwikPicReportsMaintenanceQueryMakerUserProgramsHelpExit

Race Detail

Date

25/07/15

Track

CAUL

Rn

5

Day

Sat

Dist

1200

Tc

G

Prize

80.0

Class

OPN.3+.FM

ClubClass

3UFM OPEN

Limit

54.0

Time

1.11.82

SecTime

600/35.65

ClsFig

55.

Cls+/-

T.Rat

-1.86

TcLong

GOOD 3

Rail Pos

TRUE POSITION ENTIRE COURSE

Chg CIsFig

RaceTimes

Agelpm

H.Gen

J.Gen

PSN

On

Off

Full Screen

HKI

No MPG

Dbl-Clk Horse for Prev Runs

Fp

Horse

Mgn

\$Won

Jockey

Trainer

Bn

Cwt

Apc

Odds

Fluctuations

NSWPr

VICPr

Prs

Str2Fin

Subsequent

SCScore

NR

NPr

PrSeHist

AHSP

r/sHist

PFCls+/-

ETR

L6R

TR

TPr

EPr

L6Pr

WR

WTR

WPr

WTPr

BM To6

BM Fin

BM Lst6

Gear_Chg

Rn

Winner

Track

Dys

Fp

Mgn

Dist

Tc

TcLong

Class

MPG

R.BM To6

BM To6

BM Fin

BM Lst6

Gear_Chg

R.Cls To6

Cls To6

Cls Fin

Cls Lst6

In-Run Comment

Stew.Rep

ShortComment

ShortRace

C

H Set 3 deep N/C MF. 5-6 deep t. ROS to take lead 150m. Fought hard to just hold on. BMF - TF

J

R

G

S Def

U Def

Cus1

Cus2

UD

C1

C2

Time

Mps

Enable Column Drag

S Def

U Def

Cus1

Cus2

Subsequent

JocStats

TrainStats

Print RQ

PrevRuns

Back

Kwik

Southcoast Racing Database
One-Click Update
OnScrQueries
KwikPik
Reports
Maintenance
QueryMaker
UserPrograms
Help
Exit

Race Detail

Date
Track
Rn
Day
Dist
Tc
Prize
Class
ClubClass
Limit
Time
SecTime
ClsFig
Cls+/-
T.Rat
TcLong
Rail Pos

25/07/15
CAUL
5
Sat
1200
G
80.0
OPH.3+ FM
3UFM OPEN
54.0
1:11.82
600/35.65
55.
-1.86
GOOD 3
TRUE POSITION ENTIRE COURSE

H.Gen
J.Gen

Chg CIsFig
RaceTimes
PR
NR
AgImp

PSN
On
Off
Full Screen
HKI
No MPG

Fp	Horse	Mgn	\$Won	Jockey	Trainer	Bn	Cwt	Apc	Odds	Fluctuations	NSWP	WICPr	Prs	Srt2m	Subsequent	SCScore	NR	NPR	PrSeHist	AHSP	r/sHist	PFCl+/-	ETR	L6R	TR	TPR	EPR	L6PR	WR	WTR	WPR	WTPR	BM To6	BM Fm	BM Lst6	Gear_Chg
1	FORGERESS	WON	48.0	Kateylin Malyon	G J SCOTT	12	52.5	-1.5	13-2	7-1.8,1,13-2	7.90	7.90	7, 6*	71.80		42	5	11.09	7	62.1 mf	7.1	6	8	9	58.92	231.06	313.26	9	9	59.53	59.22	2.1	-5.8	-7.9		
2	IGGMACCOL	.1	14.4	TSadler	R W SMERDON	10	58.0	-2.0	15	10-1,15-1	18.30	17.90	12,12*	71.82		57	8	14.11	10	67.5 m/fbm	0.0	25	2	8	32.75	900.00	4.68	5	8	13.01	18.63	5.4	-5.7	-11.1		
3	NORTHERN SAINT	2.1	7.2	DThernton	M ELLERTON & S ZAHRA	9	52.5	-1.5	13-2	11-2,13-2	8.30	8.60	11, 10	72.08	4	55	6	12.42	8	65.6 m/fbm	10.3	3	7	4	9.50	13.48	23.29	8	7	26.49	13.98	4.9	-3.7	-8.6		
4	PILLY'S WISH	2.2	3.6	MJDee	M G PRICE	8	53.5	-2.0	13-4F	5-2,13-4F	4.20	3.60	5, 5	72.08		68	4	10.50	11	75.2 bm	0.0	25	4	7	12.50	900.00	9.88	4	5	9.35	10.70	1.3	-3.6	-4.9		
5	BRING A RING	2.5	2.0	CNewitt	MATTHEW DALE	11	54.0		20	25-1,20-1	28.80	30.70	1, 1*	72.16		70	9	15.36	3	51.6 mf	11.9	1	25	1	4.06	1.50	900.00	1	1	3.36	3.68	-1.9	-3.3	-1.4	NROL 1ST	
6	YOUNG TIGERS JEUN	2.7	1.0	CWilliams	D HAYES & T DABERNIG	3	54.0		11-2	5-1.6,1,11-2	5.80	6.40	6, 7*	72.20	6	33	10	16.30	6	58.6 mf	10.5	7	5	10	148.24	286.10	10.18	10	10	135.13	141.38	2.0	-3.1	-5.1		
7	FLASH OF DOUBT	4.7	1.0	Jyellonell	R D GRIFFITHS	6	54.5	-1.5	20	20-1,20-1	31.40	27.00	4, 4	72.48	5	75	1	7.48	9	65.8 m/fbm	0.0	4	6	6	10.78	22.04	12.52	3	4	6.47	8.09	0.5	-1.1	-1.6		
8	BET YOU SHE ROCKS	5.5	1.0	CSchofield	M M LAURIE	5	54.0		40	30-1,40-1	47.20	51.20	9,11	72.08	9	33	3	8.04	2	32.2 op	4.5	25	25	25	900.00	900.00	900.00	25	25	900.00	900.00	3.7	-0.3	-4.0		
9	FINE APPROACH	7.3	1.0	DOliver	RYAN BALFOUR	2	55.0		4	4-1.9,2-4-1	4.90	5.00	8, 8	72.84		88	2	7.62	4	52.7 mf	0.0	25	1	5	10.01	900.00	4.06	2	2	5.47	7.08	3.0	1.5	-1.5		
10	VAIN ATTRACTION	7.8	1.0	ChrisParnham	D K WER	1	54.0		16	9-1,16-1	15.10	18.00	10, 9	72.96		58	12	11.56	12	90.2 bm	0.0	25	3	3	8.94	900.00	4.68	6	6	14.00	10.91	4.5	2.0	-2.5		
11	AWARE	9.1		ReganBayless	HEATH CONNERS	4	53.0	-1.0	10	20-1,10-1	12.20	13.00	3, 2	73.12		60	7	12.70	5	54.3 mf	7.1	2	25	2	4.77	5.13	900.00	7	3	20.76	7.76	0.1	3.3	3.2		
12	LIBERATED ROSE	17.1		DGauci	W G COOPER	7	54.0		60	60-1,60-1	41.30	43.80	2, 3*	74.58	3	10	11	16.75	1	30.1 op	15.5	5	25	25	900.											

Race Detail (in finishing order) complete with pre-race Punting Form Rating Data for each runner is shown in the Top Pane.

The Lower Pane provides a Meeting Summary showing details for the winner of each race (incl pre-race Punting Form Rating Data).

Figure 16 - Race Detail, PF Enabled Custom 1 'Plus-Plus' Column Setting

Southcoast Racing Database

One-Click Update OnScrQueries KwikPik Reports Maintenance QueryMaker UserPrograms Help Exit

Race Detail

Date

25/07/15

Track

CAUL

Rn

5

Day

Sat

Dist

1200

Tc

G

Prize

80.0

Class

OPN.3+.FM.

ClubClass

3UFM OPEN

Limit

54.0

Time

1.11.82

SecTime

600/35.65

ClsFig

55.

Cls+/-

T.Rat

-1.86

TcLong

GOOD 3

Rail Pos

TRUE POSITION ENTIRE COURSE

Chg ClsFig

RaceTimes

Agelmp

<

>

PR

NR

H.Gen

J.Gen

Full Screen

H/K

No MPG

PERN

☒ On

☐ Off

Fp

Horse

Mgn4

Mgn2

MgnF

EarPce

L12to10

10to8

8to6

6to4

4to2

2toFin

L1200

L1000

L800

L600

L400

L200

L12mk

L10rnk

L8rnk

L6rnk

L4rnk

L2rnk

Rnk12F

Rnk10F

Rnk8F

Rnk6F

Rnk4F

Rnk1210

Rnk108

Rnk86

Rnk64

Rnk42

Rnk2F

Rat

Air

1

FORGERESS

3.2

0.7

0.0

12.62

11.49

11.87

11.48

11.72

46.56

35.07

23.20

11.72

14

14

13

12

Cus 1 Column Setting is selected for both the Top and Bottom Pane (see Radio Buttons – bottom of screen). The Top and Bottom Pane has also been scrolled to the right in this view.

Race Detail (in finishing order) complete with Sectional and 200m Split raw time data for each runner is shown in the Top Pane.

The Lower Pane provides a Meeting Summary showing details for the winner of each race (incl Sectional and Split raw time data).

Figure 17 - Race Detail, PF Enabled Custom 2 Column Setting

Race Detail																																																	
Date	Track	Rn	Day	Dist	Tc	Prize	Class	ClubClass	Limit	Time	SecTime	ClsFig	Cls+/-	T.Rat	TcLong	Rail Pos																																	
25/07/15	CAUL	5	Sat	1200	G	80.0	OPN.3+.FM.	3UFM OPEN	54.0	1.11.82	600/35.65	55.		-1.86	GOOD 3	TRUE POSITION ENTIRE COURSE																																	
H.Gen										J.Gen																																							
PSN On Off										Full Screen										HKI No MPG																													
Fp	Horse	Mgn	\$Won	Jockey	Trainer	Bn	Cwt	Pos12	Pos10	Pos8	Pos6	Pos4	Pos2	PosF	Bin	Mgn12	Mgn10	Mgn8	Mgn6	Mgn4	Mgn2	MgnF	M/C	Rnk12F	Rnk10F	Rnk8F	Rnk6F	Rnk4F	Rnk1210	Rnk108	Rnk86	Rnk64	Rnk42	Rnk2F	Odds	L12mk	L10mk	L8mk	L6mk	L4mk	L2mk	Flud							
1	FORGERESS	WON	48.0	KatelynMalyon	Q J SCOTT	12	52.5		7	7	7	2	1		B			4.0	4.0	3.2	0.7	0.0	-1.5		3	3	2			5	6	2	2	13-2			14	14	13	12	7-1								
2	IGGMACOO	.1	14.4	TSadler	R W SMERDON	10	58.0		12	12	12	8	2					8.1	7.3	5.9	2.8	0.1	-2.0		1	1	1			1	3	1	1	15			8	6	1	3	10-								
3	NORTHERN SAINT	2.1	7.2	DThornton	M ELLERTON & S ZAHRA	9	52.5		10	11	10	6	3					6.6	6.8	4.7	2.5	2.1	-1.5		2	2	3			6	1	3	2	13-2			11	10	16	12	11-								
4	PILLY'S WISH	2.2	3.6	MJDee	M G PRICE	8	53.5		5	5	5	3	4					3.3	3.2	2.7	1.0	2.2	-2.0		4	5	4			3	8	4	4	13-4F			22	35	25	25	5-2								
5	BRING A RING	2.5	2.0	CNewitt	MATTHEW DALE	11	54.0		1	1	1	1	5					0.0	0.0	0.0	0.0	2.5			10	10	8			7	11	8	7	20			48	59	49	43	25-								
6	YOUNG TIGERS JEUN	2.7	1.0	CWilliams	D HAYES & T DABERNIG	3	54.0		6	6	6	5	6					3.8	3.9	2.9	1.6	2.7			5	4	5			8	4	6	5	11-2			23	32	28	27	5-1								
7	FLASH OF DOUBT	4.7	1.0	JyeMcneil	R D GRIFFITHS	6	54.5		4	4	4	4	7		B			2.1	2.4	2.2	1.5	4.7	-1.5		9	9	7			12	9	7	9	20			46	56	47	53	20-								
8	BET YOU SHE ROCKS	5.5	1.0	CSchofield	M M LAURIE	5	54.0		9	9	11	9	8					5.4	5.6	4.9	3.2	5.5			6	6	6			9	7	4	6	40			28	39	30	40	30-								
9	FINE APPROACH	7.3	1.0	Doliver	RYAN BALFOUR	2	55.0		8	8	8	10	9					5.0	4.9	3.9	3.9	7.3			8	8	9			4	4	8	8	4			41	55	51	46	4-1								
10	VALE ATTRACTION	7.8	1.0	ChrisParnham	D K WER	1	54.0		11	10	9	11	10					6.9	6.4	4.2	4.2	7.8			7	7	10			2	1	8	10	16			35	51	55	57	9-1								
11	AIWARE	9.1		ReganBayliss	HEATH CONNERS	4	53.0		3	3	3	7	11					1.9	2.0	1.7	2.7	9.1	-1.0		11	11	11			10	9	11	11	10			64	72	71	75	20-								
12	LIBERATED ROSE	17.1		Dgauci	W G COOPER	7	54.0		2	2	2	12	12					0.9	1.0	1.2	6.4	17.1			12	12	12			11	12	12	12	60			86	94	95	94	60-								
Rn	Winner	Track	Dys	Fp	Mgn	Dist	Tc	TcLong	Class	MPG	Strs	Pos12	Pos10	Pos8	Pos6	Pos4	Pos2	PosF	Bin	Mgn12	Mgn10	Mgn8	Mgn6	Mgn4	Mgn2	MgnF	M/C	Rnk12F	Rnk10F	Rnk8F	Rnk6F	Rnk4F	Rnk1210	Rnk108	Rnk86	Rnk64	Rnk42	Rnk2F	Dow	L12mk	L10mk	L8mk	L6mk	L4mk	L2mk	RE			
1	JUST FOR STARTERS	CAUL	25	1	-0.1	1000	G	GOOD 3	7BB . . .		10			4	4	4	2	1					1.5	1.8	1.5	1.5	0.0	M			1	5	4				1	4	4	2	Sat	84	85	58	18	13	8	-1.0	
2	STARSI	CAUL	15	1	-0.3	1400	G	GOOD 3	OPN. 2 . .		9	1	2	3	2	1	1	1			0.0	0.4	0.5	0.0	0.0	0.0	M	6	7	4	2	7	5			8	7	1	6	5	1	Sat	70	67	28	15	17	12	-6.0
3	VOLCANIC ASH	CAUL	21	1	-0.8	1400	G	GOOD 3	OPN. 3 . .		11	5	5	5	5	3	1				1.9	4.4	4.8	3.9	3.4	1.7	0.0	M	2	3	3	2	1	5			9	7	3	5	1	Sat			17	22	34	53	0.9
4	JAPHILS	CAUL	49	1	-0.5	1200	G	GOOD 3	OPN. 3 .F .		11			1	1	1	1	1		B			0.0	0.0	0.0	0.0	0.0	M			3	5	5				1	9	2	7	Sat			14	14	13	12	-1.5	
5	FORGERESS	CAUL	13	1	-0.1	1200	G	GOOD 3	OPN. 3+.FM .		12			7	7	7	2	1					4.0	4.0	3.2	0.7	0.0	M			3	3	2				5	6	2	2	Sat	91	90	82	73	60	46	-13	
6	MONTEUX	CAUL	14	1	-0.1	2400	G	GOOD 3	OPN. 3 . .		15	12	12	12	12	12	4	1		B	7.7	8.6	7.1	5.3	4.4	0.9	0.0	M	3	3	3	2	2	13			3	5	9	1	2	Sat			12	25	22	20	-7.5
7	SMOKIN JOEY	CAUL	42	1	-2.0	1200	G	GOOD 3	GS . . .W		11			9	8	7	1	1		B			6.3	4.4	2.7	0.0	0.0	M			1	1	1				1	2	1	1	Sat			45	41	42	42	-7.5	
8	REFULGENT	CAUL	14	1	-1.0	2000	G	GOOD 3	OPN. 34. .P		11		4	4	3	3	2	1		B	3.3		2.9	3.1	1.9	0.2	0.0	M		6	6	4	5			2	5	2	2	7	Sat			80	79	76	75	-14	
9	MISS ROSE DE LAGO	CAUL	14	1	-1.0	1800	G	GOOD 3	OPN. . . .		14			1	1	1	1	1					0.0	0.0	0.0	0.0	0.0	M			7	7	6				14	13	1	8	Sat								

Cus 2 Column Setting is selected for both the Top and Bottom Pane (see Radio Buttons – bottom of screen).

Race Detail (in finishing order) complete with Positions and Margins In Running, Individual Sectional and 200m Split Ranks for the race contested and Sectional Ranks considering the meeting as a whole (all races run on that day, top 10 ranks shown in red) is shown for each runner in the Top Pane.

The Lower Pane provides a Meeting Summary showing similar details for the winner of each race. This view can be useful for determining potential ‘meeting pace-bias’ at-a-glance.

Figure 18 - Previous Runs, PF Enabled Default Column Setting

Southcoast Racing Database

One-Click UpdateOnScrQueriesKwikPikReportsMaintenanceQueryMakerUserProgramsHelpExit

Previous Runs

Horse

AgSx

Trainer

Sire

Dam

Earnings

NORTHERN SAINT

5M

M ELLERTON & S ZAHRA

NORTHERN METEOR

SANTENAY

\$78595

? H.Gen

J.Gen

NextH

PrevH

RaceTimes

AgeImp

DbI-Clk Date for Rac Det. Right-Clk yellow hd. to sort.

Date	Dys	Track	Fo	Ost	Class	Rat	Mgn	Tc	Jockey	Bn	Cwt	Apc	Time	Odds	Pisr	\$Won	Prize	Lmtl	Strs	Rn	SecTime	Fluctuations	Air	Dow	Prep	Rts	M/C	ClaF	ShortComment	ShortRace	Stew Rep	Trainer	PlaceGetterA				
25/07/15	14	FLEM	4	1400	84B. 4+ . M	45.0	3.2	D	DThornton	6	53.0	-1.5	1:23.53	12	9.9*	4.0	80.0	54.0	9	3	600/35.08	15-2,12-1	45.0	Sat	4	2	M	51.0		H/S to be WB tt. M			M ELLERTON & S ZAHRA	1 Naminypiminy -1.5			
25/07/15	15	CAUL	3	1200	OPW. 3+ . FM	50.5	2.1	G	DThornton	9	52.5	-1.5	1:11.82	13-2	11.10	7.2	80.0	54.0	12	5	600/35.65	11-2,13-2	51.5	Sat	4	1	M	55.		Sett WB. Improved			M ELLERTON & S ZAHRA	1 Forgezees -.1			
																																	Spell - 157				
18/02/15	17	SANL	1	1300	70B. 3+ . FM	49.5	-0.1	G	ChrisSymc	9	58.5		1:18.48	9-2	7.7	21.0	35.0	54.0	11	3	600/34.36	5-1,9-2	51.5	Wed	3	2	M	45.0		Sett jzt WTMF. 4			M ELLERTON & S ZAHRA	2 MissSofthands .1			
05/02/15	17	SEYM	1	1300	64B. 3+ . FM	46.0	-4.5	G	ChrisSymc	4	59.0		1:16.42	15-8F	8.7	18.0	30.0	54.0	10	8		11-4,15-8F	48.0	Thu	3	1	P	41.0		H/S to be WTMF. M	Inconvenienced at s	M ELLERTON & S ZAHRA	2 Saravak 4.5				
																																	Spell - 57				
10/12/14	19	SANL	4	1200	64B. . . .	38.5	2.9	G	DThornton	10	55.0	-2.0	1:11.49	12	10.10*	1.6	35.0	55.0	13	6	600/33.19	12-1,14-1,12-1	41.5	Wed	2	5	M	43.		S/A to be WTMF tt	Slowly away.	M ELLERTON & S ZAHRA	1 GrandGallop -1.5				
21/11/14	18	KYNE	6	1200	64B. . . .	38.5	3.5	D	KatelynMa	2	57.0		1:11.04	11-4E	9.9	0.3	15.0	55.0	12	8		2-1,11-4E	41.5	Fri	2	4	P	42.0		9th 2W. Eased 3W			M ELLERTON & S ZAHRA	1 BelleQue -.8			
03/11/14	16	BRAT	3	1400	64B. . . .	41.5	2.2	G	DamianLar	6	57.0		1:26.60	13-2	7.9	1.2	15.0	54.0	15	8		6-1,7-1,13-2	44.5	Mon	2	3	P	42.		Sett MF. 4 deep t.			M ELLERTON & S ZAHRA	1 RealTime -1.8			
18/10/14	16	BDGO	4	1100	64B. . . .	42.5	1.5	G	AndrewMi	2	57.0		1:04.72	5	8.6	0.6	15.0	54.0	9	6		3-1,5-1	45.5	Sat	2	2	P	42.0		Sett WTMF. Improv			M ELLERTON & S ZAHRA	1 He'sCommanding -1.3			
02/10/14	15	BDGO	1	1100	XDN. 3+ . . S	47.5	-1.8	D	ChrisSymc	1	56.5		1:05.57	7-2	9.9*	10.5	17.5	SW	9	2		6-4,7-2	50.5	Thu	2	1	P	41.		Sett WB tt. ROS b	Respiratory issues.	M ELLERTON & S ZAHRA	2 Arrayanes 1.8				
																																	Spell - 126				
29/05/14	14	SALE	4	1400	70B. 3 . F .	45.0	2.0	S	ChrisSymc	2	57.0		1:28.42	5	2.2	0.7	17.5	55.0	8	5		9-2,5-1	51.0	Thu	1	3	P	43.0		2nd back leader. J			M ELLERTON & S ZAHRA	1 DigAPony -1.5			
15/05/14	17	BDGO	2	1400	XDN. 3 . . S	49.5	0.8	D	ChrisSymc	12	56.0		1:24.70	7-2	2.2*	3.0	17.5	SW	13	3	600/35.66	2-1,7-2	55.5	Thu	1	2	P	41.5		Sid across O/L K.			M ELLERTON & S ZAHRA	1 WorthyHonour -.8			
28/04/14	15	KILM	3	1112	XDN. 3+ . . S	42.0	3.0	G	ChrisSymc	7	56.0		1:06.47	9-4F	10.6*	1.2	15.0	SW	10	4		15-8,5-2,9-4F	48.0	Mon	1	1	P	40.5		(S/A & Tightened t	Passed fit at barrier.	M ELLERTON & S ZAHRA	1 MarvellousChoice -2.8				

? C

? H H/S to be WB tt. Made steady ground out wide. F - TF

? S

G

? SDef

? UDef

? Cus1

? Cus2

? UD

? C1

? C2

? HKI

? Time

? Mps

Enable Column Drag

? HK TrackWork

HorStats

JocStats

Print PR

Print RQ

RaceDet

Back

Kwik

S.Def Column Setting is selected (see Radio Buttons – bottom of screen).

This view shows key statistics for all previous runs of a selected horse.

Figure 19 - Previous Runs, PF Enabled User Defined Column Setting

Southeast Racing Database

OnScrUpdateOnScrQueriesKwikPikReportsMaintenanceQueryMakerUserProgramsHelpExit

Previous Runs

Horse

NORTHERN SAINT

H.Gen

AgSx

5M

Trainer

M ELLERTON & S ZAHRA

Sire

NORTHERN METEOR

Dam

SANTENAY

Earnings

\$78595

NextH

PrevH

RaceTimes

AgeImp

J.Gen

DbI-Clk Date for Rac Det. Right-Clk yellow hd. to sort.

Date	Dys	Track	Rn	Fp	Mgn	Dist	Tc	TcLong	Class	MPG	Limit	R Typ	Prize	\$Won	Race Name	Dow	M/C	Course	Prep	Rfs	Jockey	Trainer	Bn	Cwt	Apc	Odds	Fluctuations	NSWP	VICPR	Prs	Strs	SecTime	RL600	OffTime	StrtFm	Tdfl	R.BM.To6	BM To6	BM Fin	B
09/08/15	14	FLEM	3	4	3.2	1400	D	SOFT 5	84B. 4+ . M .		54.0	BMV84	80.0	4.0	MELVILLE YATESK	Sat	M		4	2	DThornton	M ELLERTON & S Z	6	53.0	-1.5	12	15-2,12-1	10.00	11.50	9.9*	9	600/35.08	35.12	83.53	84.16	-0.03	-1.0	-5.4	-1	
25/07/15	157	CAUL	5	3	2.1	1200	G	GOOD 3	OPN. 3+. FM Spell - 157		54.0	OPEN	80.0	7.2	MYPUNTER.COM JK	Sat	M		4	1	DThornton	M ELLERTON & S Z	9	52.5	-1.5	13-2	11-2,13-2	8.30	8.60	11.10	12	600/35.65	35.72	71.82	72.08	0.02	4.9	4.9	-3.7	-6
18/02/15	13	SANL	3	1	-0.1	1300	G	GOOD 3	70B. 3+. FM		54.0	BMV70	35.0	21.0	SCHWEPES (BM7)	Wed	M		3	2	ChrisSymons	M ELLERTON & S Z	9	58.5	9-2	5-1,9-2	4.90	5.90	7.7	11	600/34.36	35.24	78.48	78.48	-7.8	-2.5	-6.4	-5		
05/02/15	13	SEYM	8	1	-4.5	1300	G	GOOD 3	64B. 3+. FM Spell - 57		54.0	BMV64	30.0	18.0	BULLAROOK PARK	Thu	P		3	1	ChrisSymons	M ELLERTON & S Z	4	59.0	15-8F	11-4,15-8F	3.00	3.00	8.7	10	35.08	76.42	76.52	-0.10	1.6	5.6	2.5	-5		
10/12/14	19	SANL	6	4	2.9	1200	G	GOOD 3	64B. . . .		55.0	BMV64	35.0	1.6	SPORTUS GLOBAL	Wed	M		2	5	DThornton	M ELLERTON & S Z	10	55.0	-2.0	12	12-1,14-1,12-1	18.60	17.40	10.10*	13	600/33.19	34.04	71.49	71.93	-0.03	5.1	5.1	0.8	-4
21/11/14	18	KYNE	8	6	3.5	1200	D	DEAD 4	64B. . . .		55.0	BMV64	15.0	0.3	ZOUSTAR AT WOC	Fri	P		2	4	KatelynMalloy	M ELLERTON & S Z	2	57.0	11-4E	2-1,11-4E	4.30	3.90	9.9	12	35.24	71.04	71.64	-0.08	8.7	8.7	5.3	-3		
03/11/14	16	BRAT	8	3	2.2	1400	G	GOOD 3	64B. . . .		54.0	BMV64	15.0	1.2	HYGAIN (BM64)	Mon	P		2	3	DamenLane	M ELLERTON & S Z	6	57.0	13-2	6-1,7-1,13-2	8.20	8.00	7.9	15	35.20	86.60	86.64	0.24	13.1	13.1	7.8	-5		
18/01/14	16	BOGO	6	4	1.5	1100	G	GOOD 3	64B. . . .		54.0	BMV64	15.0	0.6	BENDIGO RSL (BM	Sat	P		2	2	AndrewMalloy	M ELLERTON & S Z	2	57.0	5	3-1,5-1	4.50	4.70	8.8	9	35.88	64.72	65.06	-0.04	1.1	1.1	7.5	-6		
02/10/14	159	BOGO	2	1	-1.8	1100	D	DEAD 4	MDN. 3+. . S Spell - 126		SW	MDN	17.5	10.5	GALLIC CLB UNDEI	Thu	P		2	1	ChrisSymons	M ELLERTON & S Z	1	56.5	7-2	6-4,7-2	3.60	3.90	9.9*	9	36.08	65.57	65.60	-0.03	0.2	6.3	8.3	2		
29/05/14	14	SALE	5	4	2.0	1400	S	SLOW 7	70B. 3 . F .		55.0	BMV70	17.5	0.7	HOME HARDWARE	Thu	P		1	3	ChrisSymons	M ELLERTON & S Z	2	57.0	5	9-2,5-1	2.2	2	8		37.96	88.42	88.72	-0.02	12.4	12.4	14.0	1		
15/05/14	17	BOGO	3	2	0.8	1400	D	DEAD 4	MDN. 3 . . S		SW	MDN	17.5	3.0	CARLTON DRAUGH	Thu	P		1	2	ChrisSymons	M ELLERTON & S Z	12	56.0	7-2	2-1,7-2		2.2*	13	600/35.66	35.64	84.70	84.92	-0.10	15.0	15.0	12.7	-2		
28/04/14	139	KILM	4	3	3.0	1112	G	GOOD 3	MDN. 3+. . S		SW	MDN	15.0	1.2	BOX HILL RSL MDN	Mon	P		1	1	ChrisSymons	M ELLERTON & S Z	7	56.0	9-4F	15-8,5-2,9-4F		10, 8*	10		35.16	66.47	66.76	0.19	12.3	12.3	11.5	-2		

C

HHS to be WB tt. Made steady ground out wide. F - TF

J

R

G

C S Def

U Def

Cus 1

Cus 2

UD

C1

C2

HKJ

Time

Mps

Enable Column Drag

HK TrackWork

HorStats

JocStats

Print PR

Print RQ

RaceDet

Back

Kwik

U.Def Column Setting is selected (see Radio Buttons – bottom of screen).

This view shows a comparison of the Official Race Time Versus the Punting Form Digital Time (**orange** headings) for all previous runs of a selected horse.

Figure 20 - Previous Runs, PF Enabled Custom 1 Column Setting

Southcoast Racing Database

One-Click UpdateOnScrQueriesKwikPikReportsMaintenanceQueryMakerUserProgramsHelpExit

Previous Runs

Horse

AgSx

Trainer

Sire

Dam

Earnings

NORTHERN SAINT

5M

M ELLERTON & S ZAHRA

NORTHERN METEOR

SANTENAY

\$78595

?H.Gen

J.Gen

NextH

PrevH

RaceTimes

AgeImp

Dbl-Clk Date for Rac Det. Right-Clk yellow hd. to sort.

Date	Dys	Track	Rn	Fp	Mgn	Dist	Tc	TcLong	Class	MPG	R.BM.To6	BM.To6	BM.Fin	BM.Lst6	Gear_Chg	R.Cls.To6	Cls.To6	Cls.Fin	Cls.Lst6	In-Run Comment	Stew.Rep	ShortComment	ShortRace	PosF
09/09/15	14	FLEM	3	4	3.2	1400	D	SOFT 5	84B.4+.M .		-1.0	-1.0	-5.4	-4.4		3.7	3.7	2.2	-1.5			H/S to be WB tt. Made steady ground ou	4	
25/07/15	15	CAUL	5	3	2.1	1200	G	GOOD 3	OPN.3+.FM .		4.9	4.9	-3.7	-8.6		9.6	9.6	4.4	-5.2			Sett WB. Improved slightly l. Made stead	3	
									Spell - 157															
18/02/15	12	SANL	3	1	-0.1	1300	G	GOOD 3	70B.3+.FM .		-7.8	-2.5	-6.4	-3.9		-5.7	-0.4	-2.9	-2.5			Sett just WTMF. 4 deep t. ROS to take le	1	
05/02/15	13	SEYM	8	1	-4.5	1300	G	GOOD 3	64B.3+.FM .		1.6	5.6	2.5	-3.1	BLIN OFF 1ST TIME	1.8	5.8	2.8	-3.0		Inconvenienced at start. Became H/S to be WTMF. Improved quickly 4 dee	1		
									Spell - 57															
10/12/14	19	SANL	6	4	2.9	1200	G	GOOD 3	64B. . .		5.1	5.1	0.8	-4.3	BLIN 1ST TIME.	6.0	6.0	2.4	-3.6		Slowly away.	S/A to be WTMF tt. Worked home strong	4	
21/11/14	18	KYNE	8	6	3.5	1200	D	DEAD 4	64B. . .		8.7	8.7	5.3	-3.4		9.3	9.3	6.4	-2.9			9th 2W. Eased 3W t. Chased solidly mak	6	
03/11/14	16	BRAT	8	3	2.2	1400	G	GOOD 3	64B. . .		13.1	13.1	7.8	-5.3		13.8	13.8	8.8	-5.0			Sett MF. 4 deep t. Chased hard entire st	3	
18/10/14	16	BDOGO	6	4	1.5	1100	G	GOOD 3	64B. . .		1.1	1.1	7.5	6.4		1.6	1.6	8.5	6.9			Sett WTMF. Improved between runners	4	
02/10/14	15	BDOGO	2	1	-1.8	1100	D	DEAD 4	MDN.3+..S		0.2	6.3	8.3	2.0		-0.9	5.2	6.2	1.0		Respiratory issues.	Sett WB tt. ROS between runners to pul	4	
									Spell - 126															
29/05/14	14	SALE	5	4	2.0	1400	S	SLOW 7	70B.3.F .		12.4	12.4	14.0	1.6		13.3	13.3	15.5	2.2			2nd back leader. Joined/headed leader t	1	
15/05/14	17	BDOGO	3	2	0.8	1400	D	DEAD 4	MDN.3 . .S		15.0	15.0	12.7	-2.3		13.7	13.7	10.4	-3.3			Slid across O/L. Kept battling on strongl	2	
28/04/14	19	KILM	4	3	3.0	1112	G	GOOD 3	MDN.3+..S		12.3	12.3	11.5	-0.8		11.1	11.1	9.3	-1.8		Passed fit at barrier. Slowly awd (S/A & Tightened for room.) Last fence.	3		

?C

?H H/S to be WB tt. Made steady ground out wide. F - TF

?S

G

C S Def

C U Def

C G S1

C S2

UD

C1

C2

HKI

Time

Mps

Enable Column Drag

? HK TrackWork

HorStats

JocStats

Print PR

Print RQ

RaceDet

Back

Kwik

Cus 1 Column Setting is selected (see Radio Buttons – bottom of screen).

This view shows the All Average and Class Benchmarks, along with the Early Race Pace - to the 600m marker, for all previous runs of a selected horse. Refer to Figure 9 for Benchmarks explanation.

Figure 21 - Previous Runs, PF Enabled Custom 1 'Plus' Column Setting

Southcoast Racing Database

One-Click Update OnScrQueries KwikPik Reports Maintenance QueryMaker UserPrograms Help Exit

Previous Runs F3 - Next Horse F4 - Prev Horse ESC - Prev Screen

Horse: **NORTHERN SAINT** AgSx: **5M** Trainer: **M ELLERTON & S ZAHRA** Sire: **NORTHERN METEOR** Dam: **SANTENAY** Earnings: **\$78595**

? H.Gen J.Gen

NextH PrevH
RaceTimes
AgeImp

Dbl-Click Date for Rac Det. Right-Click yellow hd. to sort.

Date	Dys	Track	ShortComment	ShortRace	PosF	SCScore	NR	NPr	PrSeHist	AHSP	r/sHist	PFCIs+/-	ETR	L6R	TR	TPr	EPr	L6Pr	WR	WTR	WPr	WTPr	Limit	RTyp	Prize	\$Won	Race Name	Dow	M/C	Course	Prep	Rfs	J
08/08/15	14	FLEM	H/S to be WB tt. Made steady ground ou		4	60	7	16.23	8	71.6	mf/bm	-0.1	7	2	4	9.73	17.29	5.83	6	4	23.45	13.76	54.0	BMV84	80.0	4.0	MELVILLE YATES/CRAIG C	Sat	M		4	2	D
25/07/15	15	CAUL	Sett WB. Improved slightly t. Made stead		3	55	6	12.42	8	65.6	mf/bm	10.3	3	7	4	9.50	13.48	23.29	8	7	26.49	13.98	54.0	OPEN	80.0	7.2	MYPUNTER.COM JOIN TOC	Sat	M		4	1	D
18/02/15	13	SANIL	Sett just WTMF. 4 deep t. ROS to take le		1	44	7	16.47	8	69.5	mf/bm	7.1	11	1	9	306.76	481.38	4.08	9	10	531.10	388.89	54.0	BMV70	35.0	21.0	SCHWEPES (BM70)	Wed	M		3	2	C
05/02/15	12	SEYM	H/S to be WTMF. Improved quickly 4 dee		1	84	1	4.29	6	68.2	mf/bm	-2.8	25	1	3	7.14	900.00	1.60	5	3	7.15	7.14	54.0	BMV64	30.0	18.0	BULLAROOK PARK STUD	Thu	P		3	1	C
10/12/14	19	SANIL	S/A to be WTMF tt. Worked home strong		4	43	7	14.61	12	63.8	mf	1.1	9	1	11	367.18	251.29	3.03	10	13	82.52	134.76	55.0	BMV64	35.0	1.6	SPORTUS GLOBAL EVEN	Wed	M		2	5	D
21/11/14	19	KYNE	9th 2W. Eased 3W t. Chased solidly mak		6	57	5	12.86	10	61.9	mf	0.0	9	1	10	141.43	72.25	3.76	6	9	43.46	66.49	55.0	BMV64	15.0	0.3	ZOUSTAR AT WOODSIDE	Fri	P		2	4	K
03/11/14	16	BRAT	Sett MF. 4 deep t. Chased hard entire st		3	36	4	15.96	13	68.1	mf/bm	0.0	25	4	25	900.00	900.00	9.06	25	25	900.00	900.00	54.0	BMV64	15.0	1.2	HYGAIN (BM64)	Mon	P		2	3	D
18/10/14	16	BDGO	Sett WTMF. Improved between runners		4	31	7	14.32	6	57.7	mf	7.2	25	3	25	900.00	900.00	5.04	25	25	900.00	900.00	54.0	BMV64	15.0	0.6	BENDIGO RSL (BM64)	Sat	P		2	2	A
02/10/14	15	BDGO	Sett WB tt. ROS between runners to pul		1	82	1	2.73	1	43.6	op/mf	-9.3	25	25	25	900.00	900.00	900.00	2	2	2.67	5.33	SW	MDN	17.5	10.5	GALLIC CLB UNDERBELLY	Thu	P		2	1	C
29/05/14	14	SALE	2nd back leader. Joined/headed leader t		4																		55.0	BMV70	17.5	0.7	HOME HARDWARE RIVETT	Thu	P		1	3	C
15/05/14	17	BDGO	Slid across O/L. Kept battling on strong		2																		SW	MDN	17.5	3.0	CARLTON DRAUGHT 150	Thu	P		1	2	C
28/04/14	15	KILM	(S/A & Tightened for room.) Last fence.		3																		SW	MDN	15.0	1.2	BOX HILL RSL MDN PLATE	Mon	P		1	1	C

? C

? H H/S to be WB tt. Made steady ground out wide. F - TF J R

? S G

? S.Def U.Def Cus1 Cus2 UD C1 C2 HKI Time Mps Enable Column Drag ? HK TrackWork HorStats LocStats Print PR Print RD RaceDet Back Kwik

Cus 1 Column Setting is selected (see Radio Buttons – bottom of screen). The screen has been scrolled to the right.

This view shows the pre-race Punting Form Rating Data for all previous runs of a selected horse.

Figure 22 - Previous Runs, PF Enabled Custom 2 Column Setting

Southcoast Racing Database

One-Click UpdateOnScrQueriesKwikPikReportsMaintenanceQueryMakerUserProgramsHelpExit

Previous Runs

F3 - Next HorseF4 - Prev HorseESC - Prev Screen

Horse

AgSxTrainerSireDamEarnings

NORTHERN SAINT5MM ELLERTON & S ZAHRA

NORTHERN METEOR

SANTENAY

\$78595

?H.Gen

J.Gen

NextHPrevH

RaceTimes

AgeImp

Dbl-Click Date for Race Det. Right-Click yellow hd. to sort.

Date	Dys	Track	Rn	Fp	Mgn	Dist	Tc	TcLong	Class	MPG	Strs	Pos12	Pos10	Pos8	Pos6	Pos4	Pos2	PosF	Blin	Mgn12	Mgn10	Mgn8	Mgn6	Mgn4	Mgn2	MgnF	M/C	Rnk12F	Rnk10F	Rnk8F	Rnk6F	Rnk4F	Rnk1210	Rnk108	Rnk86	Rnk64	Rnk42	Rnk2F	Dow	L12mk	L10mk	L8mk	L6mk	L4mk	L2mk	R.BM.To6	BM.Y	
09/08/15	14	FLEM	3	4	3.2	1400	D	SOFT 5	84B.4+.M	.		9	9	9	9	9	6	4		2.7	5.3	5.5	6.5	4.2	2.2	3.2	M	2	2	2	2	2	9	2	6	3	1	2	Sat	32	35	35	39	42	46	-1.0	-1.0	
25/07/15	19	CAUL	5	3	2.1	1200	G	GOOD 3	OPN.3+.FM	.		12		10	11	10	6	3				6.6	6.8	4.7	2.5	2.1	M			2	2	2	3		6	1	3	2	Sat			11	10	16	12	4.9	4.9	
									Spell - 157																																							
18/02/15	13	SANL	3	1	-0.1	1300	G	GOOD 3	70B.3+.FM	.		11	7	7	7	7	1	1			3.4	5.8	5.7	4.0	0.0	0.0	M		2	2	2	2		11	3	3	1	2	Wed			31	6	3	16	28	-7.8	-2.5
05/02/15	19	SEYM	8	1	-4.5	1300	G	GOOD 3	64B.3+.FM	.		10			8	6	1	1					4.3	3.0	0.0	0.0	P					1	1			3	1	1	Thu			11	3	5	1.6	5.6		
									Spell - 57																																							
10/12/14	19	SANL	6	4	2.9	1200	G	GOOD 3	64B.	.		13		11	10	10	7	4	B		5.2	4.5	3.6	4.1	3.7	2.9	M		1	2	1	3		1	4	4	2	2	Wed			1	2	8	25	29	5.1	5.1
21/11/14	19	KYNE	8	6	3.5	1200	D	DEAD 4	64B.	.		12			9	9	7	6				6.9	6.6	4.0	3.5	P								4	1	2	Fri			2	2	22	8.7	8.7				
03/11/14	16	BRAT	8	3	2.2	1400	G	GOOD 3	64B.	.		15			7	7	5	3				6.4	3.6	1.4	2.2	P					2	2			7	2	5	Mon			3	2	6	13.1	13.1			
18/10/14	16	BDGO	6	4	1.5	1100	G	GOOD 3	64B.	.		9			8	7	7	4				2.8	2.7	3.8	1.5	P					1	2			2	6	2	Sat			12	18	15	1.1	1.1			
02/10/14	12	BDGO	2	1	-1.8	1100	D	DEAD 4	MDN.3+.	.S		9			9	9	3	1				5.6	3.3	2.1	0.0	P					1	1			1	1	1	Thu			21	23	7	0.2	6.3			
									Spell - 126																																							
29/05/14	14	SALE	5	4	2.0	1400	S	SLOW 7	70B.3.	.F		8			2	1	2	4				0.2	0.0	0.5	2.0	P					6	6			6	4	5	Thu			14	8	6	12.4	12.4			
15/05/14	17	BDGO	3	2	0.8	1400	D	DEAD 4	MDN.3.	.S		13			2	2	3	2				0.5	1.0	1.6	0.8	P					5	4			4	6	5	Thu			58	54	30	15.0	15.0			
28/04/14	19	KILM	4	3	3.0	1112	G	GOOD 3	MDN.3+.	.S		10			10	8	8	3				7.4	6.9	5.7	3.0	P					1	1			3	1	1	Mon			4	7	2	12.3	12.3			

?C

?HHS to be WB ft. Made steady ground out wide. F - TF

?S

G

?C S DefC U DefC Cus1C Cus2UDC1C2HKITimeMps

Enable Column Drag?

?HK TrackWork

HorStatsJocStats

Print PRPrint RQRace DetBackKwik

Cus 2 Column Setting is selected (see Radio Buttons – bottom of screen).

This view shows Positions and Margins In Running, Individual Sectional and 200m Split Ranks for the race contested and Sectional Ranks considering the meeting as a whole (all races run on that day, top 10 ranks shown in red), for all previous runs of a selected horse.

Southcoast Racing Database

One-Click Update

OnScrQueries

KwikPik

Reports

Maintenance

QueryMaker

UserPrograms

Help

Exit

Previous Runs

F3 - Next Horse

F4 - Prev Horse

ESC - Prev Screen

Horse

AgSx

Trainer

Sire

Dam

Earnings

NORTHERN SAINT

5M

M ELLERTON & S ZAHRA

NORTHERN METEOR

SANTENAY

\$78595

NextH

PrevH

RaceTimes

AgeImp

H.Gen

J.Gen

Dbi-Clk Date for Rac Det

Right-Clk yellow hd. to sort

Date	Dys	Track	TR	TPR	EP	L6Pr	WR	WTR	WPPr	WTPR	EarPce	LatPce	L1200	L1000	L800	L600	L400	L200	12to10	10to8	8to6	6to4	4to2	2toFin	To 1200	To 1000	To 800	To 600	To 400	To 200	Lat 200	Time	Sec1	Sec2	Sec3	Sec4	Sec5	Sec6	HKG	Har					
08/09/15	14	FLEM	4	9.73	17.29	5.83	6	4	23.45	13.76	12.57	11.61	69.52	58.04	46.44	34.68	23.36	12.24	11.48	11.76	11.32	11.12	12.24	14.64	26.12	37.72	49.48	60.80	71.92	12.24	1.23.53														
25/07/15	13	CAUL	4	9.50	13.48	23.29	8	7	26.49	13.98	12.84	11.60			46.40	34.88	23.24	11.72			11.52	11.64	11.52	11.72			25.68	37.20	48.84	60.36	11.72	1.11.82													
18/02/15	12	SANL	9	306.76	481.38	4.08	9	10	531.10	388.89	12.93	11.54			58.14	46.16	34.32	22.68	11.80		11.98	11.84	11.64	10.88	11.80	20.34	32.32	44.16	55.80	66.68	11.80	1.18.48													
05/02/15	13	SEYM	3	7.14	900.00	1.60	5	3	7.15	7.14	12.04	11.46			34.39	22.48	11.68				11.91	10.80	11.68				42.13	54.04	64.84	11.68	1.16.42														
10/12/14	19	SANL	11	367.18	251.29	3.03	10	13	82.52	134.76	13.26	11.35			56.85	45.41	33.89	22.49	11.69		11.44	11.52	11.40	10.80	11.69	15.08	26.52	38.04	49.44	60.24	11.69	1.11.49													
21/11/14	18	KYNE	10	141.43	72.25	3.76	6	9	43.46	66.49	12.33	11.55			34.64	23.20	12.16					11.44	11.04	12.16				37.00	48.44	59.48	12.16	1.11.04													
03/11/14	16	BRAT	25	900.00	900.00	9.06	25	25	900.00	900.00	13.05	11.48			34.44	22.28	11.38					12.16	10.90	11.38				52.20	64.36	75.26	11.38	1.26.60													
18/10/14	16	BDGO	25	900.00	900.00	5.04	25	25	900.00	900.00	11.74	11.91			35.72	24.64	12.54					11.08	12.10	12.54				29.34	40.42	52.52	12.54	1.04.72													
02/10/14	15	BDGO	25	900.00	900.00	900.00	2	2	2.67	5.33	12.16	11.72			35.16	24.16	12.40					11.00	11.76	12.40																					

This view shows the Sectional and 200m Split raw time data for all previous runs of a selected horse.

Figure 24 - SuperTune....Date Selection

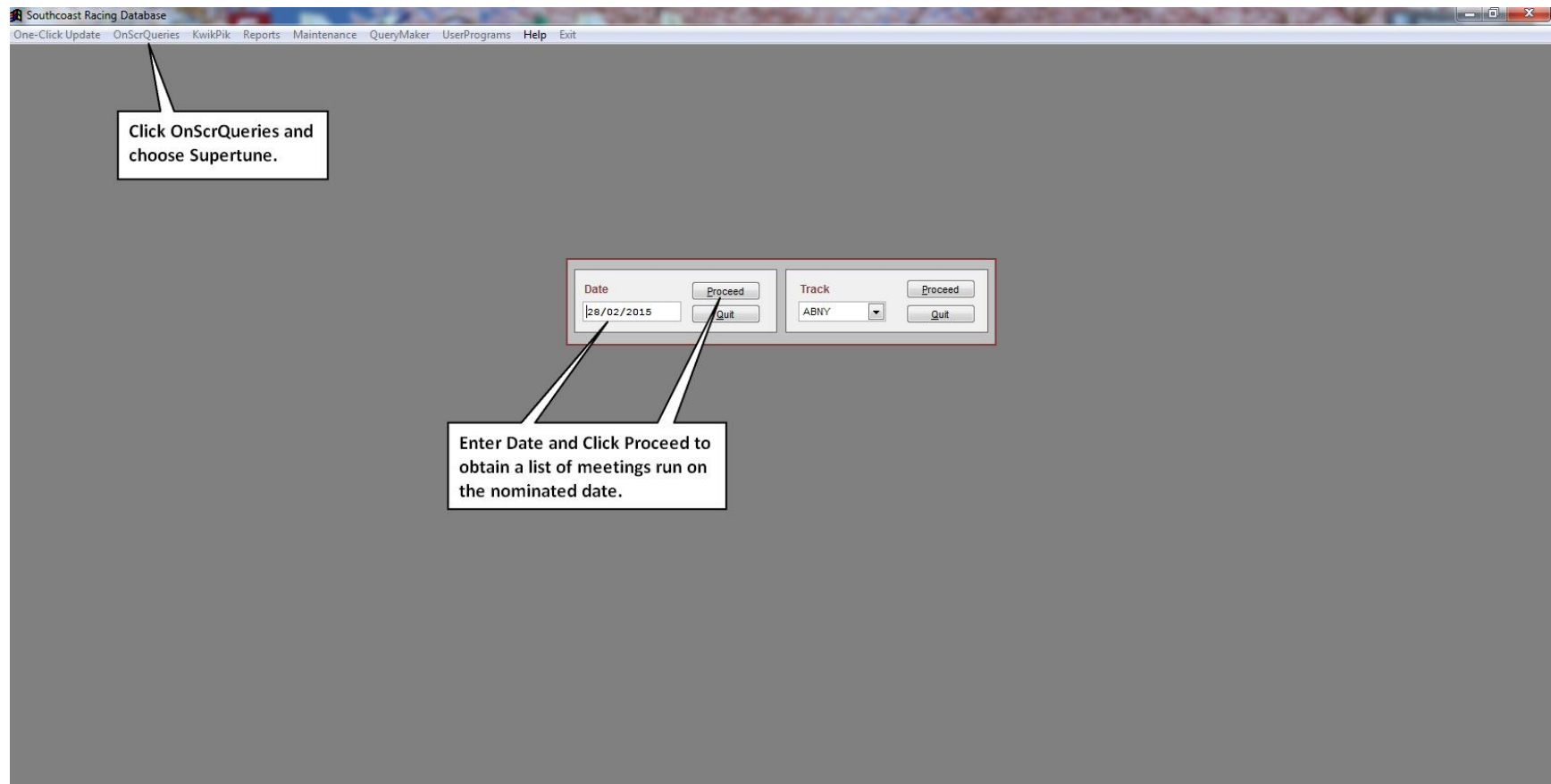


Figure 25 - SuperTune....Meeting List for Date

Southcoast Racing Database

One-Click Update OnScrQueries KwikPik Reports Maintenance QueryMaker UserPrograms Help Exit

SuperTune

28/02/15

You can change the values in columns with orange heading by typing in your own values, then pressing Tab or Enter. Note that changes are permanent until changed again. Ensure that the format for all changes is correct, especially Time and Sec Time. LongTc and R.Typ cannot be changed on Barrier Trials and non-AU/NZ meetings.

Meeting	Track	Rn	Dist	Class	Cls	Cls+/-	Limit	Time	Sec Time	Tc	LongTc	Prize	R.Typ	MPG	Race Name
ALEX	CAUL	1	1200	G3 .3 .CG .P	53.5	0.0	SWP	1:10.36	600/34.17	D	GOOD 4	150.7	OPEN		WILLIAM HILL ZEDITAVE STAKES
ALSP	CAUL	2	1400	G3 .4+.M .P	56.0	0.0	SWP	1:23.22	600/34.82	D	GOOD 4	150.7	OPEN		PREMIER SIGNS STAKES
ASCT	CAUL	3	1400	G2 .3 .F .P	54.0	0.0	SWP	1:23.22	600/34.35	G	GOOD 3	201.0	OPEN		POLYTRACK ANGUS ARMANASCO STK
BKLL	CAUL	4	1800	G2 .3 .S	54.5	0.0	SW	1:48.44	600/35.76	G	GOOD 3	201.0	OPEN		RACE-TECH AUST. AUTUMN CLASSI
CAUL	CAUL	5	1400	G1 .3+. .W	61.0	0.0	WFA	1:23.05	600/33.76	G	GOOD 3	402.0	OPEN		ITALKTRAVEL FUTURITY STAKES
CHIN	CAUL	6	1800	G2 . . .W	60.0	0.0	WFA	1:48.00	600/35.83	G	GOOD 3	201.0	OPEN		CROWN GOLDEN ALE PETER YOUNG
DOOM	CAUL	7	1100	G1 . . .	61.0	0.0	50.5	1:02.28	600/33.98	G	GOOD 3	402.0	OPEN		WILLIAM HILL OAKLEIGH PLATE
E BY	CAUL	8	1200	G1 .2 .S	46.5	0.0	SW	1:10.53	600/35.55	G	GOOD 3	1015.0	OPEN		WILLIAM HILL BLUE DIAMOND STK
ELLE	CAUL	9	2000	1R . . .	59.0	0.0	54.0	2:02.39	600/35.26	G	GOOD 3	121.5	QLTY		MYPUNTER.COM MORNINGTON PREL.
GCST															
GUNN															
HAST															
K GR															
MORP															
MT I															
THAN															
TUMT															
TUNC															
W FM															
WARW															
Y GL															
YASS															
GUNN	BT														
TUNC	BT														

DBI-Click Track to display race details

Figure 26 - SuperTune....Track Selection

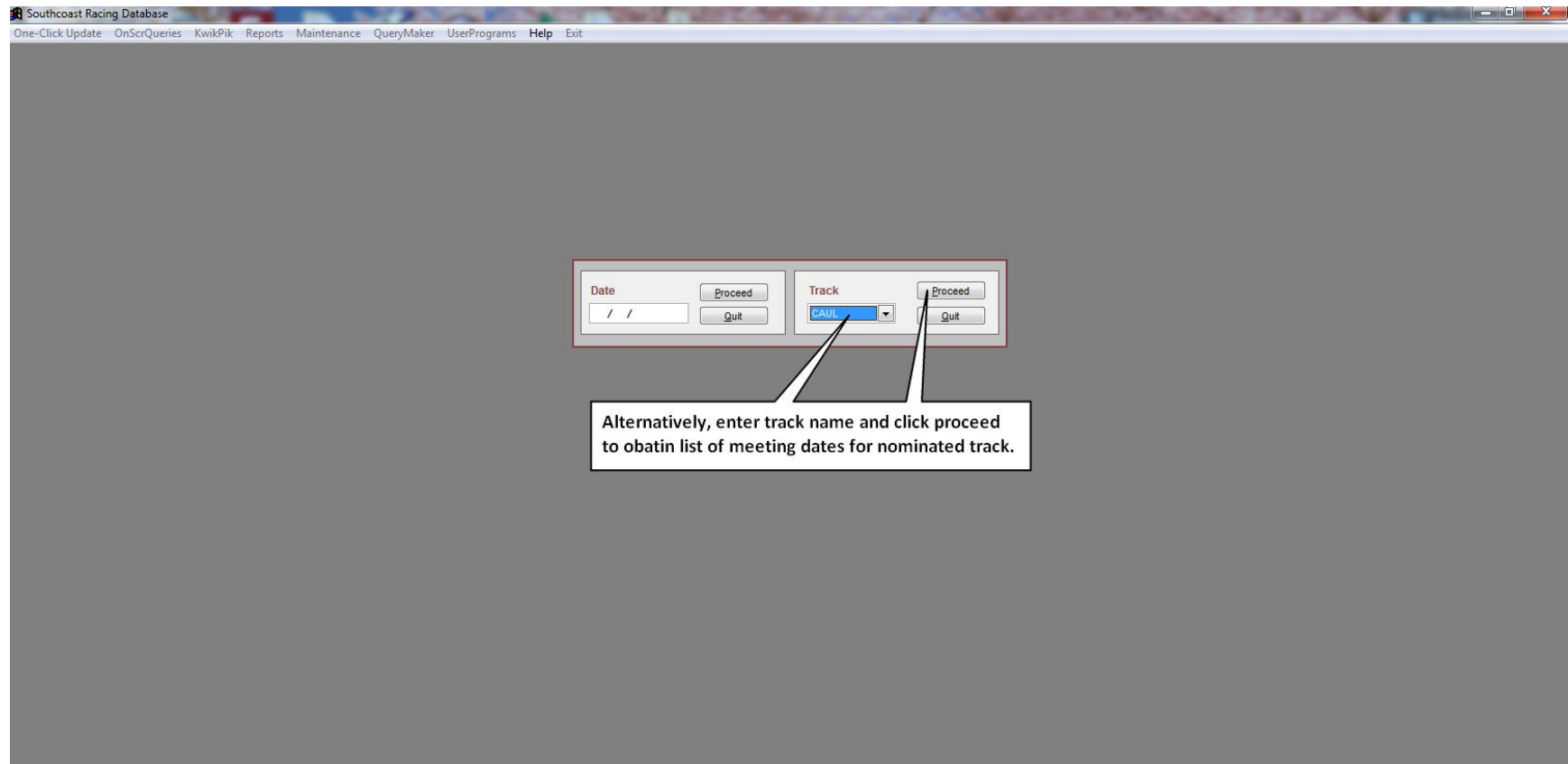


Figure 27 - SuperTune....Meeting Date List for Track

Southcoast Racing Database

One-Click Update OnScrQueries KwikPik Reports Maintenance QueryMaker UserPrograms Help Exit

SuperTune

CAUL

You can change the values in columns with orange heading by typing in your own values, then pressing Tab or Enter. Note that changes are permanent until changed again. Ensure that the format for all changes is correct, especially Time and Sec Time. LongTc and R Typ cannot be changed on Barrier Trials and non-AU/NZ meetings.

Meeting	Track	Rn	Dist	Class	Cls	Cls+/-	Limit	Time	Sec Time	Tc	LongTc	Prize	R Typ	MPG	Race Name
28/02/2015	CAUL	1	1200	G3 .3 .CG .P	53.5	0.0	SWP	1.10.36	600/34.17	D	GOOD 4	150.7	OPEN		WILLIAM HILL ZEDITAVE STAKES
14/02/2015	CAUL	2	1400	G3 .4+.M .P	56.0	0.0	SWP	1.23.22	600/34.82	D	GOOD 4	150.7	OPEN		PREMIER SIGNS STAKES
18/10/2014	CAUL	3	1400	G2 .3 .F .P	54.0	0.0	SWP	1.23.22	600/34.35	G	GOOD 3	201.0	OPEN		POLYTRACK ANGUS ARMANASCO STK
15/10/2014	CAUL	4	1800	G2 .3 .S	54.5	0.0	SW	1.48.44	600/35.76	G	GOOD 3	201.0	OPEN		RACE-TECH AUST. AUTUMN CLASSI
11/10/2014	CAUL	5	1400	G1 .3+. .W	61.0	0.0	WFA	1.23.05	600/33.76	G	GOOD 3	402.0	OPEN		ITALKTRAVEL FUTURITY STAKES
28/09/2014	CAUL	6	1800	G2 . . .W	60.0	0.0	WFA	1.48.00	600/35.83	G	GOOD 3	201.0	OPEN		CROWN GOLDEN ALE PETER YOUNG
20/09/2014	CAUL	7	1100	G1 . . .	61.0	0.0	50.5	1.02.28	600/33.98	G	GOOD 3	402.0	OPEN		WILLIAM HILL OAKLEIGH PLATE
30/08/2014	CAUL	8	1200	G1 .2 .S	46.5	0.0	SW	1.10.53	600/35.55	G	GOOD 3	1015.0	OPEN		WILLIAM HILL BLUE DIAMOND STK
16/08/2014	CAUL	9	2000	LR . . .	59.0	0.0	54.0	2.02.39	600/35.26	G	GOOD 3	121.5	QLTY		MYPUNTER.COM MORNINGTON PREL.
26/07/2014															
23/07/2014															
05/07/2014															
17/05/2014															
03/05/2014															
21/04/2014															
19/04/2014															
12/04/2014															
22/02/2014															
08/02/2014															
05/02/2014															
01/02/2014															
25/01/2014															
15/01/2014															
04/01/2014															
26/12/2013															
11/12/2013															
07/12/2013															

Dbt-Click Track to display race details

Appendix 1 – Punting Form Rating Explanations

Neural Rating (NR, NPr)

This is essentially a rating based on a broad spread of statistical factors. Achievements are measured relative to the horse population as a whole (and sometimes market expectations), rather than being specifically based on individual performance. Twenty factors are used within the calculation and this rating is likely to be the most closely aligned with market expectations for an upcoming race. That is, the neural rated price, when looked at over a very large sample, will generally have a strike rate which is in line with the winning probability associated with that price.

Class or Weight rating (WR, WPr)

Every class of race is given a numerical value (in kg) and runner ratings are determined by taking the assigned Class value for the race, adding the WOL (weight over limit) amount and subtracting a beaten margin adjustment. The beaten margin adjustment involves converting the amount a horse has been beaten in lengths, to an equivalent weight value (in kilograms). This type of rating has the benefit of not being influenced by race pace, time or track conditions etc.

Race Time rating (TR, TPr)

Each runner is rated purely using their overall race time. The rating is a performance measure which compares the race time against a benchmark or Par time for the track and distance. Each rating contains adjustments for par time 'strength', potential weight for age improvement, race pace, weight carried and prevailing track conditions. These adjustments are made so we can compare 'apples with apples', regardless of when, where, or how races have been run. This type of rating does not have any race Class considerations.

Sectional Time Rating (L6R, L6Pr)

Each runner is rated purely using their last 600m sectional time. All other comments relating the overall race time rating (above) apply to the sectional time rating. The unique aspect of this rating is that we have individual sectional times (spanning several years) on which to base the rating, available for all runners, across most metropolitan and provincial race meetings conducted throughout Australia (we use digital timing, off race videos to obtain these ourselves).

SC Score

This encompasses each of the previous four ratings methodologies and takes the form of a 'consensus score' from 0 to 100. How each runner has 'ranked' in each of the four ratings categories (or three, where there is no sectional rating available) contributes to the final consensus score. This value appears for all runners listed in the meeting form guides (provided you have a current monthly ratings subscription) and links to the relevant Ratings Suite published for that meeting (as well as providing a link for individual meeting purchases).

PFCLs+/-

The Punting form Class Change indicator indicates traditional 'weight-style' class movement. A –ve value indicates a class drop compared to the previous start.

Run Style (r/sHist)

The run style indicator categorises where each runner has typically settled in its past performances. Our research has shown that regardless of early speed ability a horse will try and take up its 'usual' position in running. Early speed ability is the factor which will determine how easily it is likely to be able to attain this position and how much energy it will have available to finish the race off.

Predicted Settle Position (PrSeHist)

As the name suggests, the predicted settle position is where we are predicting the runner to settle in the upcoming field of horses (based on [AHSP](#) – Average Historical Settle Position %). This is a useful indicator when looked at in combination with run style and early time rating. For instance, a horse with L (leader) as a run style, which is predicted to settle 4th in running and mid-field based on ETR, will most likely have to work hard to hold a prominent position.

Early Time Rating (ETR, EPr)

Each runner is rated purely using their To 600m sectional time. All other comments relating the overall race time rating and L600 sectional time rating (above) apply to the early time rating.

Time Adjusted Weight Rating (WTR, WTPr)

Each runner is rated using a combination of the traditional Weight and Time rating factors.

How are the various Rating Ranks (and Prices) arrived at?

These rankings are NOT based on career best performance or any sort of average rating figure etc. Our ranking (and pricing) algorithm is based on what is known as a 'paradox of odds' approach. We determine a likely 'performance envelope' for each horse based on past ratings and have each horse participate in what amounts to thousands of simulated contests, to determine a winning probability for each runner in an upcoming race.

Other Notes:

PpOdds – Pre Post Odds.

Rat – Southcoast Weight Rating.

Price – Southcoast Weight Rated Price.